



**BUST
THE DUST**

VDEX®
Vacuum Dust  Extraction

Call Today to Order • 800-521-8104

Section 1 - VDEX

Don't Get Caught Without the Right Tool Attachments

VDEX[®] is our Vacuum Dust **EX**traction system = **VDEX**[®]

Protect your workers from Respirable Silica Dust and other harmful dusts on your next construction job. VDEX[®] from Michigan Pneumatic Tool is the most comprehensive collection of effective, universal adapters for popular construction tools.

- OSHA TABLE 1 COMPLIANT
- Unique system with a pneumatic powered vacuum and water bath filtration system.
- Universal adapter system that fits virtually every common brand of pavement breaker, rivet buster, chipping hammer and more.
- Beat the dust – avoid the fines!

VDEX[®] Attachments - US Patent No. 10,780,541





Optional 2103S-VDEX split extended lower sleeve available

RB-VDEX

One Size Fits All Rivet Busters

Rivet buster VDEX® attachments are designed to fit every rivet buster in the rental and industrial market today.

Tool Not Included



NOTE: For job sites requiring water dust suppression use the **VDEX WATER PLUG**.



CH-VDEX

Solid Retainer Series: Oval and Round Collar for Four-Bolt or Gooseneck Chipping Hammers

CH-VDEX attachments are brand specific. The CH-VDEX attaches to the chipping hammer using the solid metal retainer as the anchoring mechanism. The retainers have specific tapers or straight shank diameter mounts.

Tool Not Included

CH-VDEX Components



CH-VDEX Kit Consists of:

Part No.	Description
1.	2198-VDEX Bellow O.A.L. 8"
2.	2199-VDEX Snorkel
3.	OR-6X38 O-Ring
4.	2105-VDEX Coupler
5.	1194-2 Retainer Spring
6.	See Chart Chipping Hammer Retainer
7.	HS16 1-1/4" Hose Clamp
8.	HS24 1-1/2" Hose Clamp

Round Collar Retainer Kits

Retainer Only Part No.	Tool Specific Kits
1190R-CPT-VDEX	CH-VDEX-CPT-RC (fits MPT, CP, SUL)
1190R-IR-VDEX	CH-VDEX-IR-RC
1190R-1.942-VDEX	CH-VDEX-APT-RC
HHW1-300-VDEX	CH-VDEX-W-SERIES

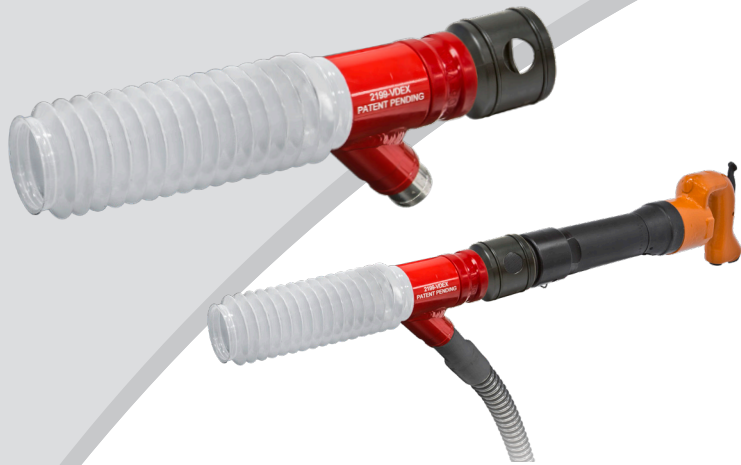
Oval Collar Retainer Kits

Retainer Only Part No.	Tool Specific Kits
1190-CPT-VDEX	CH-VDEX-CPT (fits MPT, CP, SUL)
1190-IR-VDEX	CH-VDEX-IR (fits IR)
1190-APT-VDEX	CH-VDEX-APT (fits APT)
1190-MINI-VDEX	*CH-VDEX-MINI
HHW1-300-VDEX	*CH-VDEX-W-SERIES

*W-Series and Mini Retainers are not the same price as standard kits

NOTE: For job sites requiring water dust suppression use the **VDEX WATER PLUG**.

Call Today to Order • 800-521-8104



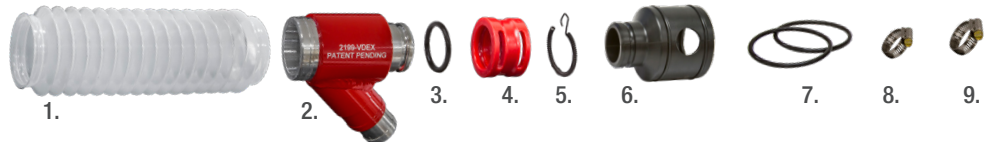
CH-VDEX-1291

Quick Change Retainer Series: Round Collar for Four-Bolt or Gooseneck Chipping Hammers

One size fits most common industry standard 1291 series quick change retainers. The unique design of the VDEX® clamshell allows the CH-VDEX-1291 series to be installed over the sleeve of the quick change retainer, regardless of the tool manufacturer (brand) or handle configuration.

Tool Not Included

CH-VDEX-1291 Components



CH-VDEX-1291 Kit Consists of:

Part No.	Description
1. 2198-VDEX	Bellow O.A.L. 8"
2. 2199-VDEX	Snorkel
3. OR-6X38	O-Ring
4. 2105-VDEX	Coupler
5. 1194-2	Retainer Spring
6. VV-0199-1291QC	Clamshell Adapter
7. OR-6230-6	O-Rings
8. HS16	1-1/4" Hose Clamp
9. HS24	1-1/2" Hose Clamp



Clamshell Adapter & O-Rings

One Size Fits All Q.C. Retainers
VV-0199-1291QC



Quick Change Retainer Kits

Retainer with Clamshell & O-Rings
1291-SUL2-VDEX (MPT, CP, SUL)
1291-IRC2-VDEX (IR)
1291-1.942-VDEX (APT)

NOTE: For job sites requiring water dust suppression use the **VDEX WATER PLUG**.



SC-VDEX-1BL

Chisel Scaler Steel Body Industrial Grade Attachment

SC-VDEX-1BL is designed to slip over the nose of the 1BL chisel scaler and attach like a normal needle tube, using the chisel latch as the lock support.

Tool Not Included

NOTE: Must use longer chisels when using the SC-VDEX-1BL.
NOTE: Chisels should be installed prior to installing the SC-VDEX-1BL.
NOTE: SC-VDEX-1BL may not fit all brands or manufacturers of scalers.
NOTE: VDEX WATER PLUG not suitable for this model.



RH-VDEX

Roto Hammer Retainer Kits Clamshell Design Fits Over Tool

RH-VDEX attachments are designed to fit a variety of tool brands.

The RH-VDEX attaches to the roto hammer using the VDEX clamshell design. Simply install the clamshell over the nose of the roto hammer and install o-rings. Then attach the poly coupler with retainer springs to the snorkel and bellow assembly.

Tool Not Included

RH-VDEX Components

RH-VDEX Kit Consists of:

Part No.	Description
1. 2198-VDEX	Bellow O.A.L. 8"
2. 2199-VDEX	Snorkel
3. OR-6X38	O-Ring
4. 2105-VDEX	Coupler
5. 1194-2	Retainer Spring
6. See Chart	Roto Hammer Clamshell
7. OR-6230-2	O-Rings (3)
8. HS16	1-1/4" Hose Clamp
9. HS24	1-1/2" Hose Clamp



RH-VDEX

Clamshell Adapters Only	Roto Hammer Kits
VV-0199-9B	RH-VDEX-9B (MP-9B, CP-9B)
VV-0199-MRD9	RH-VDEX-MRD9 (SUL-MRD9)
VV-0199-THD1100	RH-VDEX-THD1100 (TOKU THD-1100N)

NOTE: For job sites requiring water dust suppression use the **VDEX WATER PLUG**.



SC-VDEX-1BLNS

Needle Scaler Aluminum Body Industrial Grade Attachment

SC-VDEX-1BLNS is designed to fit over the needle tube on the 1BL style needle scaler. The aluminum snorkel slides over the nose of the needle scaler and an o-ring on the inside of the snorkel keeps the attachment from sliding off the needle tube.

Tool Not Included

NOTE: SC-VDEX-1BLNS may not fit all brands or manufacturers of needle scalers.

NOTE: VDEX WATER PLUG not suitable for this model.



S1-VDEX
Industrial Grade Attachment

The S1-VDEX is designed to easily attach to S1 single piston scabblers using the factory live handle assembly. The bristled skirt surrounds the piston to contain dust and debris, allowing the vacuum to draw the dust away from the work area.

Tool Not Included

NOTE: For job sites requiring water dust suppression use the **VDEX WATER PLUG**.

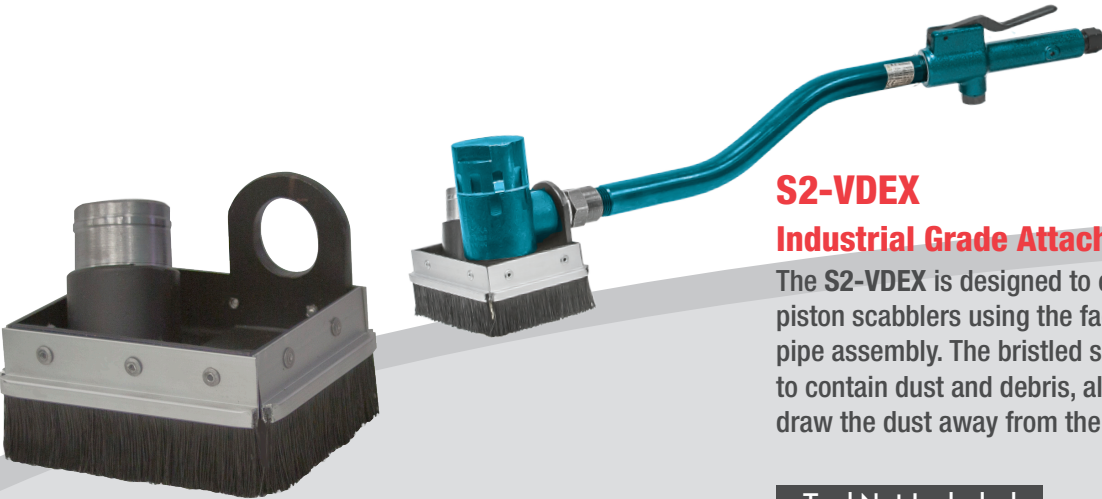


T3-VDEX
Industrial Grade Attachment

T3-VDEX is designed to easily attach to T3 triple piston scabblers using the factory live handle assembly. The live handle can be installed in either side of the T3 scabblers (shown in perpendicular configuration.) The live handle and dead handle retain the aluminum skirt and steel frame on to the body of the T3 scabblers. The bristled skirt surrounds the piston to contain dust and debris, allowing the vacuum to draw the dust away from the work area.

Tool Not Included

NOTE: For job sites requiring water dust suppression use the **VDEX WATER PLUG**.



S2-VDEX
Industrial Grade Attachment

The S2-VDEX is designed to easily attach to S2 single piston scabblers using the factory live handle and pipe assembly. The bristled skirt surrounds the piston to contain dust and debris, allowing the vacuum to draw the dust away from the work area.

Tool Not Included

NOTE: For job sites requiring water dust suppression use the **VDEX WATER PLUG**.



903-VDEX
Industrial Grade Attachment

903-VDEX is designed to easily attach to 903 triple piston scabblers using the factory live handle and pipe assemblies. The bristled skirt surrounds the piston to contain dust and debris, allowing the vacuum to draw the dust away from the work area.

Tool Not Included

NOTE: For job sites requiring water dust suppression use the **VDEX WATER PLUG**.



PB-RD-VDEX
Pavement Breaker Attachment

- PB-RD-VDEX fits all pneumatic, electric and hand held hydraulic pavement breakers, regardless of weight class and shank size.
- Our patented friction mag design attaches to the chisel rather than the tool.

Tool Not Included

NOTE: For job sites requiring water dust suppression use the **VDEX WATER PLUG**.



PB-RD-VDEX
Rock Drill Attachment

- PB-RD-VDEX fits all pneumatic, electric and hand held hydraulic rock drills.
- Our patented friction mag design attaches to the drill steel rather than the tool.
- The friction mag device rotates when used with rock drills.
- The friction mag device allows the PB-RD-VDEX to be easily installed over the shank and collar end of all rock drill steel.
- When using rock drill bits over 1-7/8" diameter it is recommended that you use the VDEX-NZL-4IN bristle foot.

Tool Not Included



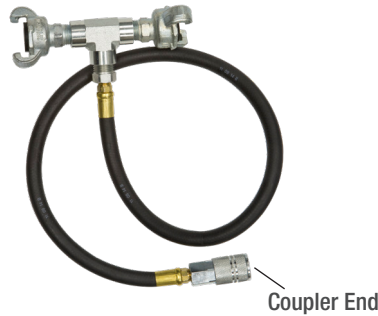
NOTE: For job sites requiring water dust suppression use the **VDEX WATER PLUG**.

**JAC-3P Vacuum
Dust Extraction Vacuum System
for All VDEX[®] Attachments**

The VDEX[®] system was designed for OSHA Table 1 compliance, when used according to manufacturer instructions. The **JAC-3P** utilizes a water-based filtration system making it compact, affordable and user-friendly.



JAC-3P
Venturi Vacuum
Complete with Pail & 1-1/4" x 10 ft
Anti-Static Vacuum Hose



VDEX-WHIP
3-Way Whip Hose

Coupler End



Tool Not Included



2199-VDEX-WP-ASM

**2199-VDEX-WP-ASM
Water Plug for Use
with VDEX Attachments**

The VDEX[®] water plug attachment was designed for applications that require water to suppress dust. It can easily be used with your existing **2199-VDEX** snorkel or **PB-RD-VDEX** pavement breaker/rock drill attachment.



2199-VDEX shown with Water Plug Attachment. For use with chipping hammers, roto hammers, and rivet busters.



PB-RD-VDEX shown with Water Plug Attachment. For use with pavement breakers and rock drills.

Note: Water plug kits cannot to be used with vacuums.

NOTE: VDEX WATER PLUG, not for use with electric tools or electric tool applications.