

Air Tool Accessories

Call Today to Order • 800-521-8104



MP-2BAL



MP-4BAL

Tool Balancers

Applied ergonomics makes load weightless. Features reinforced hanging bracket with safety hook for ceiling mounting and extra holes for safety chain attachments.

Model	Tension Range	Cable Travel	Min. Hook to Hook Distance	Cable Material	Weight
MP-2BAL	0-2 lbs	5 ft	11-1/2"	Uncoated Material	1.2 lbs
MP-4BAL	2-4 lbs	5 ft	11-1/2"	Uncoated Material	1.25 lbs



MP-BD01



MP-BD03



BG20

Hubbell Balancers

Applied ergonomics makes load weightless. Features reinforced hanging bracket with safety hook for ceiling mounting and extra holes for safety chain attachments. Locking models available. Made in the USA.

Model	Tension Range	Cable Travel	Min. Hook to Hook Distance	Cable Material	Weight
MP-BD01	0.5-1.5 lbs	6 ft	9-1/2"	Coated Steel	1.3 lbs
MP-BD03	1.5-3 lbs				1.3 lbs
MP-BD05	3-5 lbs				1.5 lbs
MP-BG07	5-10 lbs	8 ft	13-7/8"	Coated Steel	6 lbs
MP-BG10	8-12 lbs				7 lbs
MP-BG15	10-15 lbs				8 lbs
MP-BG20	16-23 lbs				8 lbs



MP-SW-1 Low Range Balancer

Lightweight Steel Construction

Standard reel type spring balancer for light loads.

- Balance range 1.1-3.3 lbs
- 3/32" diameter steel cable

Tension Range	Cable Travel	Min. Hook to Hook Distance	Weight
1.1-3.3 lbs	3.9 ft	9-1/4"	1.1 lbs



Heavy-Duty Tool Balancers

Rugged, compact, precision-engineered tool balancers designed to improve productivity while reducing maintenance costs of small tools and operator fatigue. Smooth tension through the full cable length and adjustment knob for tension control ensures the safest, most reliable tool balancer. Keeps tools ready with no lifting and no wasted motion.



BL05



BL08

- Heavy-duty all steel construction
- Simple external tension adjustment
- Adjustable cable stop for convenient operation
- Ready for immediate installation with tool clip
- Automatic safety lock
- Self-contained main spring
- Steel cable with nylon sheath

Model	Tension Range	Cable Travel	Min. Hook to Hook Distance	Cable Material	Weight
MP-BL02	1.0-3.5 lbs	8 ft	10-1/4"	Nylon	2.75 lbs
MP-BL05	2.0-4.5 lbs		10-1/4"		2.75 lbs
MP-BL08	4.5-8.0 lbs		10-1/4"		3.0 lbs
MP-BL10	6.5-13.5 lbs		12-5/8"		3.0 lbs
MP-BL15	11.0-19.0 lbs		12-5/8"		3.5 lbs
MP-BL25	18.0-25.0 lbs		12-5/8"		3.5 lbs



Call Today to Order • 800-521-8104

18-3

MP-SW Series Zero Gravity Balancers

Features a tapered cable drum. Zero gravity balancers are designed to provide a consistent resistance when the operator pulls against the loaded balancer. Externally adjustable.



MP-SW-6.5

Medium-Duty Balancers

Tapered drum spring balancer for production use. The tapered drum minimizes tension build-up as the cable is extended. Ideal for small assembly operations.

- Cast aluminum construction
- Balance range 2.2-14.3 lbs
- 1/8" diameter steel cable
- 360° swivel hook

Model	Tension Range	Cable Travel	Min. Hook to Hook Distance	Weight
MP-SW-3	2.2-6.6 lbs	4.2 ft	11-3/8"	3.0 lbs
MP-SW-5	5.5-11.0 lbs			3.3 lbs
MP-SW-6.5	6.6-14.3 lbs			3.5 lbs



MP-SW-9

Heavy-Duty Balancers

Ideal for jobs up to 33 lbs where reel style balancers fail. The tapered drum minimizes tension build-up as the cable is extended.

- Cast aluminum construction
- Balance range 9.9-33 lbs
- 3/16" diameter steel cable
- 360° swivel hook

Model	Tension Range	Cable Travel	Min. Hook to Hook Distance	Weight
MP-SW-9	9.9-19.8 lbs	4.2 ft	13-1/4"	7.4 lbs
MP-SW-15	19.8-33.0 lbs			8.3 lbs



MP-SW-30

Heavy-Duty High Capacity Balancers

Designed for automobile assembly, meat packing and steel manufacturing plants. The tapered drum minimizes tension build-up as the cable is extended.

- Cast aluminum construction
- Balance range 33-154 lbs
- 7/32" diameter steel cable
- 360° swivel hook

Model	Tension Range	Cable Travel	Min. Hook to Hook Distance	Weight
MP-SW-22	33.0-48.4 lbs	4.9 ft	16-5/8"	15.9 lbs
MP-SW-30	48.4-66.0 lbs			16.7 lbs
MP-SW-40	66.0-88.0 lbs			21.5 lbs
MP-SW-50	88.0-110.0 lbs			22.8 lbs
MP-SW-60	110.0-132.0 lbs			25.5 lbs
MP-SW-70	132.0-154.0 lbs			25.9 lbs



Portable Lubricators

Model	Pipe Size	Air Flow	Weight	Length	Max O.D.	Oil Capacity
100250	1/4"	5-15 cfm	2.5 oz	2-1/2"	1"	5cc
300250	1/4"	8-20 cfm	3.5 oz	2-1/2"	1-1/4"	9cc
300375	3/8"	10-30 cfm				
400250	1/4"	8-20 cfm	5.0 oz	3-1/4"	1-5/8"	22cc
400375	3/8"	10-30 cfm				
400500	1/2"	25-65 cfm				



Air Tool Inlet Regulators

Ideal for restricting the air flow to tools not equipped with built-in regulators. Model 894 CP style regulator features brass construction and a spring loaded ratchet, which prevents unintentional setting changes.

- Easy to install, easy to use
- Provides precise regulation of air

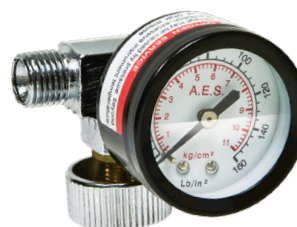
894 – 1/4" NPT
5711 – 1/4" NPT
038-0.375 – 3/8" NPT
038-0.500 – 1/2" NPT



5712-F

1/4" Regulator with Pressure Gauge

Ideal for restricting air flow to tools with 1/4" pipe thread. Features a built-in pressure gauge for perfect control of power. Handy, sturdy design and easy to attach.



Regulator Pressure Gauges

- Quality air gauge designed for use with any air tool
- Metal case with glass lens

PG1 – 1/8" MPT, back mount, 0-160 psi, 1-1/2" dial
PG2 – 1/4" MPT, back mount, 0-200 psi, 2" dial
PG3 – 1/4" MPT, bottom mount, 0-160 psi, 2" dial
 Other sizes and pressure ranges available



Air Line Pressure Gauges

- For constant reading of line pressure
- 1/4" male bottom connection
- Large indicator dial
- Chrome plated case

Model	Range	Dial Size
GB14100	0-100 psi	2"
GB14160	0-160 psi	
GB14200	0-200 psi	
GB14300	0-300 psi	
GB16160	0-160 psi	2-1/2"
GB16200	0-200 psi	
GB16300	0-300 psi	
GB17600	0-600 psi	3-1/2"



GB14300

Other sizes and pressure ranges available

Safety Excess Flow Check Valves

- OSHA approved
- Tamper-proof construction
- Allows full, unrestricted air flow
- Automatically shuts off air flow in case of sudden air line break, protecting personnel and property
- Automatic reset after line repair

Model	Inlet Size	Outlet Size
SV802	1/4" FPT	1/4" FPT
SV803	3/8" FPT	3/8" FPT
SV804	1/2" FPT	1/2" FPT
32-FS-200F-85	2" FPT	2" FPT
SV806	3/4" MPT	3/4" FPT
SV808	1" MPT	1" FPT



Full Flow Brass Ball Valves

For control of air, water and oil in hoses or pipelines up to 400 psi. Features a brass valve body, brass stems, stainless steel ball and die cast aluminum handle with a vinyl sleeve. Equipped with female threaded ends and full port design.

Model	Pipe Size
21104	1/4"
21106	3/8"
21108	1/2"
21112	3/4"
21116	1"
21120	1-1/4"



21112

Call Today to Order • 800-521-8104

18-5

Miniature Assemblies - with Gauge

MPT miniature assemblies include a filter, regulator, lubricator and gauge. Ideal where space is at a premium, and a must for maximum protection of air operated equipment. Filters feature a 5 micron sintered plastic element.

- F50-1** – 1/8" Filter
- F50-2** – 1/4" Filter
- R55-1** – 1/8" Regulator
- R55-1G** – 1/8" Regulator & Gauge
- R55-2** – 1/4" Regulator
- R55-2G** – 1/4" Regulator & Gauge
- L50-1** – 1/8" Lubricator
- L50-2** – 1/4" Lubricator



FRL-55-2

Complete Assembly	Pipe Size	Capacity	Pressure
FRL-55-1	1/8"	1-1/2 oz	0-100 psi
FRL-55-2	1/4"		

Complete Assemblies - with Gauge

MPT trio assemblies include a filter, regulator, lubricator and gauge. An efficient, compact and permanent control assembly specially designed to provide maximum protection for air operated equipment, allowing tools to produce at peak operating efficiency. *High Capacity.



FRL-108W-4

Model	Pipe Size
FRL-108W-2	1/4"
FRL-108W-3	3/8"
FRL-108W-4	1/2"
FRL-180-6*	3/4"
FRL-180-8*	1"

Regulators

MPT regulators reduce high primary air pressure to a secondary air pressure of 0-200 psi. This simple, accurate pressure reduction device provides stable air pressure within a recommended range for maximum operating efficiency. Ideal for controlling the speed and power of air equipment. To order with gauge, please specify "G" after the part number. *High Capacity.

Model	Pipe Size
R100-2	1/4"
R100-3	3/8"
R100-4	1/2"
R100-6	3/4"
R180M-8*	1"



R100-4G

Lubricators

MPT lubricators automatically introduce an oil mist into the compressed air stream. Oil lubricates all precision working parts of air operated equipment, eliminating wear and allowing tools to produce at peak operating efficiency with minimal unscheduled downtime. Works with pipe scale, water and sludge in the bowl. L28W features external oil adjustment. *High Capacity.

Model	Pipe Size	Capacity
L28W-2	1/4"	8 oz
L28W-3	3/8"	8 oz
L28W-4	1/2"	8 oz
L100-6*	3/4"	16 oz
L100-8*	1"	16 oz



L100-8

Filters

MPT filters eliminate the dangers of corrosive damage to compressed air equipment by effectively removing pipeline impurities such as scale, dirt, rust and moisture from the air stream. Designed to prevent abrasive damage. Water is drained off through a petcock. Maximum working pressure 150 psi. Features a 5 micron sintered plastic element. *High Capacity.

Model	Pipe Size	Capacity
F100-2	1/4"	8 oz
F100-3	3/8"	8 oz
F100-4	1/2"	8 oz
F100-6*	3/4"	16 oz
F100-8*	1"	16 oz



F100-4

Filters - with Automatic Drain

MPT airline filters with automatic drain automatically discharge water and contaminants from a filter for maximum protection of air operated equipment. Eliminates filter overflow. Features a 5 micron sintered plastic element. Other sizes available up to 2".

Model	Pipe Size	Capacity
FD100-2	1/4"	8 oz
FD100-3	3/8"	8 oz
FD100-4	1/2"	8 oz
FD100-6*	3/4"	16 oz
FD100-8*	1"	16 oz



FD100-4



Industrial Grade Air Hoses - with Fittings

- Maximum pressures 200/250/300 psi
- Heavy-duty double strand
- High tensile rayon cord
- Tough neoprene
- Oil resistant



Model	Hose ID	Hose OD	Length	Max. PSI	Fittings
AH-1	1/4"	1/2"	25 ft	200 psi	1/4" MPT
AH-2	1/4"	1/2"	50 ft		
AH-3	3/8"	11/16"	25 ft		
AH-4	3/8"	11/16"	50 ft		
AH-44	1/2"	7/8"	25 ft	250 psi	1/2" MPT
AH-45	1/2"	7/8"	50 ft		
AH-46	1/2"	7/8"	100 ft		
AH-5	3/4"	1-5/32"	50 ft	300 psi	CP Fittings
AH-6	1"	1-7/16"	50 ft	200 psi	CP Fittings

Other sizes also available. All air hoses are industrial grade construction.

Air Inlet Hose Swivels

Model	Fitting to Tool	Hose Connection	Note
L-1-E	7/8"-24 thread	1/2" hose barb	Swivel Only
L-2	7/8"-24 thread	3/8" MPT	
L-4	7/8"-24 thread	3/8" FPT	
L-5	3/8" MPT	1/2" hose barb	
L-3-E	1/2" MPT	1/2" hose barb	
L-8	3/4" MPT	1/2" MPT	

Safety Lock Cables

Helps prevent injury due to broken hose connections. Spring-powered loops provide a firm grip on the hose. Bleed air pressure from hose before removing safety lock cable.



Model	Cable Description (Dia x L)	Fits Hose OD
SLC1	1/8" x 20"	1/2" to 1-1/4"
SLC2	1/4" x 38"	1-1/2" to 3"

Portable Air Line Lubricators

Designed to supply oil to air tools where it is not practical to use stationary lubricators. Can be installed as far away as 25 feet. Oil flows into the line each time the tool is started. An easy and inexpensive way to keep air tools operating at peak efficiency. Features adjustable oil flow, visible oil supply and rugged casting for use in severe conditions.



O-R



O2000PR
Pressure Relief Cap



LRK
Repair Kit

Model	Oil Capacity	Pipe Size	Rec'd Air Flow @70PSI	Max. PSI	Length	Height	Weight
O-R	1.4 oz	1/2"	30 cfm	500	4-1/2"	2-1/4"	0.88 lbs
1-R	3.7 oz	3/4"	70 cfm	260	6"	2-3/4"	1.50 lbs
2-R	11.0 oz	3/4"	70 cfm	300	7"	3-1/2"	2.00 lbs
2A-R	11.0 oz	1"	70 cfm	300	7"	3-1/2"	2.00 lbs
3-R	16.0 oz	1"	150 cfm	250	10"	3-3/4"	4.25 lbs

Air Tool Oil

A specially formulated high grade lubricating oil for all piston and rotary-type air tools. Lubricates and rustproofs for longer tool life.

- OIL-080 – 4 Ounce (12 per case)
- OIL-085 – 1 Quart (6 per case)
- OIL-014 – 1 Gallon (4 per case)



For use on all chipping hammers and rivet busters. Designed to eliminate hose kinking or twisting for greater operator efficiency.



Screened Inlet Bushings

Keeps rust and other air line debris from contaminating your tools. Manufactured from solid steel with screens pressed into the bushing.



Model	Description
1989	1/4" MPT x 1/4" FPT
1990	1/4" MPT x 3/8" FPT
1991	3/8" MPT x 1/4" FPT
1992	3/8" MPT x 3/8" FPT
1993	3/8" MPT x 1/2" FPT
1994	1/2" MPT x 3/8" FPT
1995	1/2" MPT x 1/2" FPT

Call Today to Order • 800-521-8104

18-7

Whip Hoses

Whip hose assemblies accessorize every chipping hammer and rivet buster in the relevant industrial and rental market today. Whip hoses make the use and application of the chipping hammer and rivet buster easier.

1/2" Black Hydraulic Whip Hose Assemblies (300 psi)

Model	Assembly Components		
	Integral Swivel Fitting	Hose	Lubricator
1HW-HYD	1/4" MPT	1/2" ID x 6 ft	O-R w/CP Fitting
2HW-HYD	3/8" MPT		
3HW-HYD	1/2" MPT		

Model	Assembly Components		
	Integral Swivel Fitting	Hose	Lubricator
1HW-HYD-OLF	1/4" MPT	1/2" ID x 6 ft	OL-F CP Fitting
2HW-HYD-OLF	3/8" MPT		
3HW-HYD-OLF	1/2" MPT		

Model	Assembly Components	
	Integral Swivel Fitting	Hose
14HW-HYD	1/4" MPT - 1/2" MPT	1/2" ID x 6 ft
38HW-HYD	3/8" MPT - 1/2" MPT	
12HW-HYD	1/2" MPT - 1/2" MPT	



3/4" Black Hydraulic Whip Hose Assemblies (300 psi)

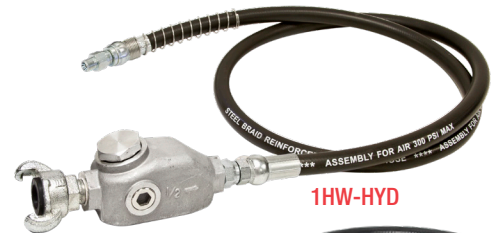
Model	Assembly Components		
	Integral Swivel Fitting	Hose	Lubricator
WH-755-1R-HYD	CP Fitting	3/4" ID x 5 ft	1-R w/CP Fitting
WH-755-2R-HYD	CP Fitting		2-R w/CP Fitting

1/2" Yellow Wire Braided Whip Hose Assemblies (500 psi)

Model	Assembly Components		
	Fitting to Tool	Hose	Lubricator
1HW-Y500HDS-14	1/4" MPT	1/2" ID x 6 ft	O-R w/CP Fitting
2HW-Y500HDS-38	3/8" MPT		
3HW-Y500HDS-12	1/2" MPT		

Model	Assembly Components		
	Swivel Fitting to Tool	Hose	Lubricator
1HW-Y500HDS-14-OLF	1/4" MPT	1/2" ID x 6 ft	OL-F w/CP Fitting
2HW-Y500HDS-38-OLF	3/8" MPT		
3HW-Y500HDS-12-OLF	1/2" MPT		
L-3-OLF-Y500HDS	L-3-E (1/2" MPT Swivel)		

Model	Assembly Components	
	Swivel Fitting to Tool	Hose
L-3-Y500HDS	L-3-E (1/2" MPT Swivel)	1/2" ID x 6 ft





Whip Hoses

1/2" Lubricator Whip Hose Assemblies

Model	Assembly Components			Air Flow @ 70 PSI
	Fitting to Tool	Hose	Lubricator	
MP-1HW-HDS	1/4" MPT	1/2" ID x 6 ft	0-R w/CP Fitting	30 cfm
MP-2HW-HDS	3/8" MPT			
MP-3HW-HDS	1/2" MPT			
MP-4HW-HDS	L-1-E swivel (7/8"-24 thread)			
MP-4HW-0.500-HDS	L-3-E swivel (1/2" MPT)			



3/4" Lubricator Whip Hose Assemblies

Model	Assembly Components			Air Flow @ 70 PSI
	Fitting to Tool	Hose	Lubricator	
WH-755-1R	3/4" CP Fitting	3/4" ID x 5 ft	1 -R w/CP Fitting	70 cfm
WH-755-2R			2-R w/CP Fitting	



Industrial Grade 10 ft Whip Hoses - with Fittings on Both Ends

- Maximum pressure 200 psi/250 psi/300 psi
- Oil resistant

Model	Hose ID	Hose OD	Length	Max. PSI	Fittings
WH-2	1/4"	1/2"	10 ft	300 psi	1/4" MPT
WH-4	3/8"	1 1/16"		300 psi	1/4" MPT
WH-6	1/2"	7/8"		250 psi	1/2" MPT
WH-7	1/2"	7/8"	10 ft	250 psi	1/4" MPT x CP
WH-8					3/8" MPT x CP
WH-9					1/2" MPT x CP
WH-94					1/2" MPT x 3/8" MPT
WH-10	1/2" MPT x 3/4" MPT				
WH-11	1/2"	7/8"	10 ft	250 psi	1/2" MPT x L-1-E
WH-12					1/2" MPT x L-3-E
WH-13					3/4" MPT x L-1-E
WH-14					3/4" MPT x L-3-E



Industrial Grade 10 ft Whip Hoses - with Swivels

Model	Fitting to Tool	Hose Connection	Note
L-1-WHIP	7/8"-24 thread	1/2" hose barb	Swivel with 1/2" x 10 ft whip hose and CP fitting
L-5-WHIP	3/8" MPT		
L-3-WHIP	1/2" MPT		

Industrial Grade 5 ft Whip Hoses - with Swivels

Model	Fitting to Tool	Hose Connection	Note
WH5-3/8	3/8" L-5	1/2" hose barb	Swivel with 1/2" x 5 ft whip hose and CP fitting
WH5-1/2	1/2" L-3-5		
WH5-7/8	7/8" L-1-E		



Call Today to Order • 800-521-8104

18-9

In-line Lubricators with Integral Filter



Model	Oil Capacity	Pipe Size	Rec'd Air Flow @70PSI	Max. PSI	Height
OL-F	1.4 oz	1/2"	30 cfm	500	2-1/4"
1L-F	3.7 oz	3/4"	70 cfm	260	2-3/4"

Winter Grade Oil - with De-Icing Additive

Designed for extreme weather conditions down to -45° F. Eliminates freezing while lubricating tools. Can be used in conventional air line lubricators or applied directly into the tool's air inlet.

Convenient "flip up" pour top (4 oz and pint bottles only)

ATL004W – 4 Ounce (12 per case)

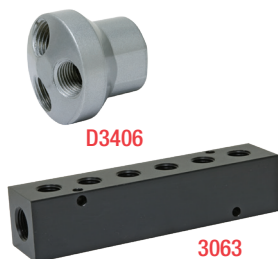
ATL016W – 1 Pint (12 per case)

ATL128W – 1 Gallon (4 per case)



In-line Manifolds

- Supply up to six air hoses from one station, using up to six different style couplers
- Mount to workbench or wall
- Permits use of air by more than one mechanic

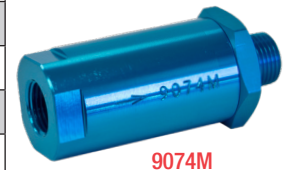


Model	Inlet Size	Outlet Size	No. of Ports
D3404	1/4"		
D3406	3/8"	1/4"	3
D3408	1/2"		
3043	3/8"	1/4"	4
3063	3/8"	1/4"	6

In-Line Air Filters

Protects air tools from rust, scale and dirt. Reduces expensive repairs and prolongs tool life. Designed for installation on air line at the point of use. Features a 40 micron sintered bronze filter element.

Model	Inlet Size	Outlet Size	Length
9072	1/4" FPT	1/4" MPT	2-5/16"
9073	3/8" FPT	3/8" MPT	2-5/16"
9074M	1/2" FPT	1/2" MPT	3-1/4"
9076M	3/4" FPT	3/4" MPT	3-1/4"
9074	1/2" FPT	1/2" FPT	3-1/4"
9076	3/4" FPT	3/4" FPT	3-1/4"



360° Swivels

Bi-directional 360° rotation universal joint keeps air hoses straight and untwisted. Increases the maneuverability of air tools and decreases operator fatigue.

922A – 1/4" NPT (Aluminum) **933ST** – 3/8" NPT (Steel)

933A – 3/8" NPT (Aluminum) **944A** – 1/2" NPT (Alum/Steel)



Mini Oilers

These oilers thread securely on to the air inlet of the air tool, delivering oil to the tool each time the throttle is actuated.

Model	Material	Thread	Capacity
1414AL	Aluminum	1/4" x 1/4"	5cc
1414BR	Brass	1/4" x 1/4"	5cc
3838BR	Brass	3/8" x 3/8"	7.5cc



Self-Storing Coiled Nylon Air Hoses

- Rugged construction
- Extends and retracts like a telephone cord
- Improves safety and efficiency
- Saves space
- Oil and abrasion resistant
- Lightweight
- 200 psi working pressure
- Reusable male fittings



Features 360° Swivel Fittings

1/4" Coiled Hose

Model	Length	Storage Length
N14-12B	12 ft	5"
N14-25B	25 ft	10"
N14-50B	50 ft	20"

3/8" Coiled Hose

Model	Length	Storage Length
N38-12B	12 ft	5"
N38-25B	25 ft	10"
N38-50B	50 ft	20"

1/2" Coiled Hose

Model	Length	Storage Length
N12-12B	12 ft	5"
N12-25B	25 ft	10"
N12-50B	50 ft	20"



Stainless Worm Gear Hose Clamps

Model	Minimum Diameter	Maximum Diameter
HS6	7/16"	25/32"
HS8	1/2"	29/32"
HS10	9/16"	1-1/16"
HS12	11/16"	1-1/4"
HS16	13/16"	1-1/2"
HS20	13/16"	1-3/4"
HS24	1-1/16"	2"
HS28	1-5/16"	2-1/4"
HS32	1-9/16"	2-1/2"



K-Series Band Clamps & Tools

Model	ID
K3-CLAMP	13/16"
K311-CLAMP	1-3/8"
K4-CLAMP	1"
K5-CLAMP	1-1/4"
K6-CLAMP	1-1/2"
K7-CLAMP	1-3/4"
K8-CLAMP	2"
K9-CLAMP	2-1/4"
K10-CLAMP	2-1/2"
K11-CLAMP	2-3/4"
K12-CLAMP	3"



K-Series Band Clamp

F100 Clamp Tool ("F" & "K" Series)

F38 Clamp Tool (not shown)
(F-Series clamps only)

F40 Clamp Tool (not shown)
(K-Series clamps only)

Neoprene Swivel Pigtail Assemblies

With female fitting and male swivel.



Model	Hose Size ID	Length	Fittings
RP0418S RP0436S	1/4"	18" 36"	1/4" NPT
RP0618S RP0624S RP0636S	3/8"	18" 24" 36"	3/8" NPT

Couplers, Connectors & Fittings

Proper Selection Guidelines

1/4" Series: Recommended for tools requiring up to 25 cfm of air, such as small drills, screwdrivers and air hammers using a 1/4" and 3/8" air hose.

3/8" Series: Recommended for tools requiring up to 50 cfm of air, such as drills up to 1/2", impact wrenches 3/8" to 5/8", die grinders and chipping hammers using a 3/8" hose.

1/2" Series: Recommended for tools requiring up to 90 cfm of air, such as drills up to 1-1/4", impact wrenches 3/4" to 1-1/4", grinders 4" to 8", and heavy chipping and riveting hammers using a 1/2" hose.

Foster industrial couplers feature the standard industrial interchange design most widely used in the industry. Please specify the same series size couplers and plugs when ordering. Plugs of one series size will not fit couplers of another size. Other types and styles of couplers and connectors are available.

Quick Change Couplers

with Male Pipe Thread

Model	Series	Thread Size
2903	1/4"	1/8" MPT
3103	1/4"	1/4" MPT
3303	1/4"	3/8" MPT
4104	3/8"	1/4" MPT
4304	3/8"	3/8" MPT
4504	3/8"	1/2" MPT
5105	1/2"	3/8" MPT
5305	1/2"	1/2" MPT
5505	1/2"	3/4" MPT



Quick Change Couplers

with Female Pipe Thread

Model	Series	Thread Size
2803	1/4"	1/8" FPT
3003	1/4"	1/4" FPT
3203	1/4"	3/8" FPT
4004	3/8"	1/4" FPT
4204	3/8"	3/8" FPT
4404	3/8"	1/2" FPT
5005	1/2"	3/8" FPT
5205	1/2"	1/2" FPT
5405	1/2"	3/4" FPT



Quick Change Plugs

Steel with Male Pipe Thread

Model	Series	Thread Size
12-3	1/4"	1/8" MPT
10-3	1/4"	1/4" MPT
14-3	1/4"	3/8" MPT
40-4	3/8"	1/4" MPT
42-4	3/8"	3/8" MPT
44-4	3/8"	1/2" MPT
52-5	1/2"	3/8" MPT
54-5	1/2"	1/2" MPT
56-5	1/2"	3/4" MPT



Quick Change Plugs

Steel with Female Pipe Thread

Model	Series	Thread Size
13-3	1/4"	1/8" FPT
11-3	1/4"	1/4" FPT
15-3	1/4"	3/8" FPT
41-4	3/8"	1/4" FPT
43-4	3/8"	3/8" FPT
45-4	3/8"	1/2" FPT
53-5	1/2"	3/8" FPT
55-5	1/2"	1/2" FPT
57-5	1/2"	3/4" FPT



Quick Change Couplers

with Hose Stem

Model	Series	Hose I.D.
3603	1/4"	1/4"
3703	1/4"	3/8"
4604	3/8"	1/4"
4804	3/8"	3/8"
4904	3/8"	1/2"
5705	1/2"	3/8"
5805	1/2"	1/2"
5905	1/2"	3/4"



Quick Change Plugs

Steel with Hose Stem

Model	Series	Hose I.D.
16-3	1/4"	1/4"
17-3	1/4"	3/8"
46-4	3/8"	1/4"
48-4	3/8"	3/8"
49-4	3/8"	1/2"
59-5	1/2"	3/8"
60-5	1/2"	1/2"
61-5	1/2"	3/4"



Barbed Hose Stems

Brass

Model	Thread Size	Hose I.D.
M-3	1/8" MPT	1/4"
M-4	1/8" MPT	5/16"
M-5	1/8" MPT	3/8"
M-6	1/4" MPT	3/16"
M-7	1/4" MPT	1/4"
M-8	1/4" MPT	5/16"
M-9	1/4" MPT	3/8"
M-11	1/4" MPT	1/2"
M-12	3/8" MPT	1/4"
M-13	3/8" MPT	3/8"
M-14	3/8" MPT	1/2"
M-15	3/8" MPT	3/4"
M-16	1/2" MPT	3/8"
M-17	1/2" MPT	1/2"
M-19	1/2" MPT	3/4"



Barbed Hose Stems

Steel

Model	Thread Size	Hose I.D.
3501	1/8" MPT	1/4"
3502	1/4" MPT	1/4"
3503	1/8" MPT	3/8"
3504	3/8" MPT	1/4"
3505	1/4" MPT	3/8"
3506	3/8" MPT	3/8"
3508	1/2" MPT	3/8"
3509	1/4" MPT	1/2"
3510	3/8" MPT	1/2"
3511	3/4" MPT	1/2"
3512	1/2" MPT	1/2"
3513	1/2" MPT	3/4"
3514	3/4" MPT	3/4"
3518	1" MPT	1"



Can be used in conjunction with Dixon universal coupling hose clamps.

Universal Couplings

Male Thread

Model	Male Thread
UM-25-M	1/4"
UM-37-M	3/8"
UM-50-M	1/2"
UM-75-M	3/4"
UM-100-M	1"



Universal Couplings

Female Thread

Model	Female Thread
UF-25-M	1/4"
UF-37-M	3/8"
UF-50-M	1/2"
UF-75-M	3/4"
UF-100-M	1"



Universal Couplings

Hose End

Model	Hose I.D.
UH-37-M	3/8"
UH-50-M	1/2"
UH-62-M	5/8"
UH-75-M	3/4"
UH-100-M	1"





High Flow Quick Change Couplers with Male Pipe Thread

Model	Body	Thread Size
2CJM2-B	1/4"	1/4" NPT
2CJM3-B	1/4"	3/8" NPT
3CJM3-B	3/8"	3/8" NPT
3CJM4-B	3/8"	1/2" NPT



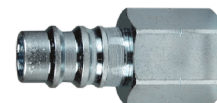
High Flow Quick Change Couplers with Female Pipe Thread

Model	Body	Thread Size
2CJF2-B	1/4"	1/4" NPT
2CJF3-B	1/4"	3/8" NPT
3CJF3-B	3/8"	3/8" NPT
3CJF4-B	3/8"	1/2" NPT



High Flow Quick Change Plugs with Male Pipe Thread

Model	Body	Thread Size
CJ2M2-LG	1/4"	1/4" NPT
CJ2M3-LG	1/4"	3/8" NPT
CJ3M3	3/8"	3/8" NPT
CJ3M4	3/8"	1/2" NPT



High Flow Quick Change Plugs with Female Pipe Thread

Model	Body	Thread Size
CJ2F2-LG	1/4"	1/4" NPT
CJ2F3-LG	1/4"	3/8" NPT
CJ3F3	3/8"	3/8" NPT

1/4" Body = 37 cfm of flow
3/8" Body = 67 cfm of flow

Compatible with CEJN™ 320 series

N-Series Interchange Female Couplers with Male Pipe Thread

Model	Body	Thread Size
4NM3	1/2"	3/8" NPT
4NM4	1/2"	1/2" NPT
4NM6	1/2"	3/4" NPT
4NM8	1/2"	1" NPT



4NM4

N-Series Interchange Female Couplers with Female Pipe Thread

Model	Body	Thread Size
4NF3	1/2"	3/8" NPT
4NF4	1/2"	1/2" NPT
4NF6	1/2"	3/4" NPT
4NF8	1/2"	1" NPT

N-Series Interchange Male Plugs with Male Pipe Thread

Model	Body	Thread Size
N4M3	1/2"	3/8" NPT
N4M4	1/2"	1/2" NPT
N4M6	1/2"	3/4" NPT
N4M8	1/2"	1" NPT



N4M6

N-Series Interchange Male Plugs with Female Pipe Thread

Model	Body	Thread Size
N4F3	1/2"	3/8" NPT
N4F4	1/2"	1/2" NPT
N4F6	1/2"	3/4" NPT
N4F8	1/2"	1" NPT

N-Series Interchange Male Plugs with Safety Locks with Male Pipe Thread

Model	Body	Thread Size
N4M4-LS	1/2"	1/2" NPT
N4M6-LS	1/2"	3/4" NPT



N4M6-LS

N-Series Interchange Male Plug with Safety Lock with Female Pipe Thread

Model	Body	Thread Size
N4F6-LS	1/2"	3/4" NPT

P-Series Interchange Male Couplers with Male Pipe Thread

Model	Body	Thread Size
4PM3	1/2"	3/8" NPT
4PM4	1/2"	1/2" NPT
4PM6	1/2"	3/4" NPT
4PM8	1/2"	1" NPT



4PM6

P-Series Interchange Female Couplers with Female Pipe Thread

Model	Body	Thread Size
4PF4	1/2"	1/2" NPT
4PF6	1/2"	3/4" NPT

Universal Coupling Accessories



AC1
Safety Lock Clip



AWR-4
Rubber Gasket for
Universal Coupling



UD-301-M
Universal "Dead-End"
Coupling

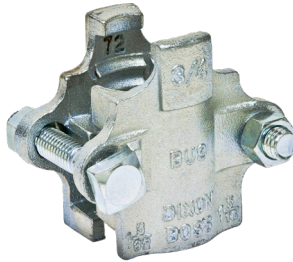


UW-300-M
Universal 3-Way Coupling

Universal Couplings

Hose Clamps

Model	Hose I.D.	For Hose O.D.
CD	3/8"	11/16" to 7/8"
B5	1/2"	1-1/16" to 1-3/16"
BU9	3/4"	1-5/32" to 1-5/16"
B14	1"	1-11/16" to 1-15/16"



Double Bolt Hose Clamps

Model	Hose I.D.	For Hose O.D.
J48	3/4"	1-1/8" to 1-3/16"
JX49	1"	1-7/16" to 1-17/32"
DL14	1-1/4"	1-5/8" to 1-13/16"
DL20	1-1/2"	1-3/4" to 2-3/64"



Barbed Hose Stems

Steel



Model	Hose O.D.
DMA	1/4" x 1/4"
DMB	3/8" x 3/8"
DM1	1/2" x 1/2"
DM6	3/4" x 3/4"
DM11	1" x 1"

Couplings

Brass



Model	FPT
PF2072	1/8"
PF2074	1/4"
PF2076	3/8"
PF2078	1/2"
PF2079	3/4"
PF2080	1"
PF20842	1/4" x 1/8"
PF20862	3/8" x 1/8"
PF20864	3/8" x 1/4"
PF20884	1/2" x 1/4"
PF20886	1/2" x 3/8"

Reducer Bushings

Brass



Model	MPT	FPT
PF20942	1/4"	1/8"
PF20962	3/8"	1/8"
PF20964	3/8"	1/4"
PF20982	1/2"	1/8"
PF20984	1/2"	1/4"
PF20986	1/2"	3/8"
PF209124	3/4"	1/4"
PF209126	3/4"	3/8"
PF209128	3/4"	1/2"
PF209168	1"	1/2"
B21612	1"	3/4"

Swivel Barbed Hose Stems

Brass



Model	MPT	Hose I.D.
M7S	1/4"	1/4"
M13S	3/8"	3/8"
M17S	1/2"	1/2"

Adapters

Brass



Model	MPT	FPT
H0202	1/8"	1/8"
H0402	1/4"	1/8"
H0404	1/4"	1/4"
H0604	3/8"	1/4"
H0606	3/8"	3/8"
H0806	1/2"	3/8"
H0808	1/2"	1/2"
H0809	3/4"	3/4"
H0810	1"	1"

Hex Nipples

Brass



Model	MPT	FPT
PF22222	1/8"	1/8"
PF22242	1/8"	1/4"
PF22244	1/4"	1/4"
PF22264	1/4"	3/8"
PF22266	3/8"	3/8"
PF22286	3/8"	1/2"
PF22288	1/2"	1/2"

Swivel Fittings

Brass



Model	MPT	FPT
25US	1/4"	1/4"
38US	3/8"	3/8"





BLS **Safety Air Blow Gun**

The first air duster ever made with a conical air curtain system to protect workers from injury. OSHA approved.

- 1/4" male inlet
- Eliminates blowing metal chips
- Adjustable air curtain angle
- Designed for safety and efficiency



336-RT **Rubber-Tip Blow Gun**

- Handy hang-up hook
- Rugged construction
- 1/4" female inlet
- Ideal for use on delicate surfaces
- Extension blow guns available



801S

Safety Brush Blow Guns

Exclusive 2-in-1 safety brush blow gun features a standard blow gun with a choice of built-in wire, nylon or horsehair brushes for fast, easy air-blast cleaning. Blow brush conforms to OSHA standards. Replacement brushes available.

- 801S** – Safety blow gun with steel brush
- 802S** – Safety blow gun with nylon brush
- 803S** – Safety blow gun with horsehair brush



TGC-090 **Tire Inflation Gauge**

Rugged, compact, lightweight and sturdy. Designed for cars and trucks. Features aluminum casting and solid brass dial calibrated from 10-90 psi in 2 lb increments.

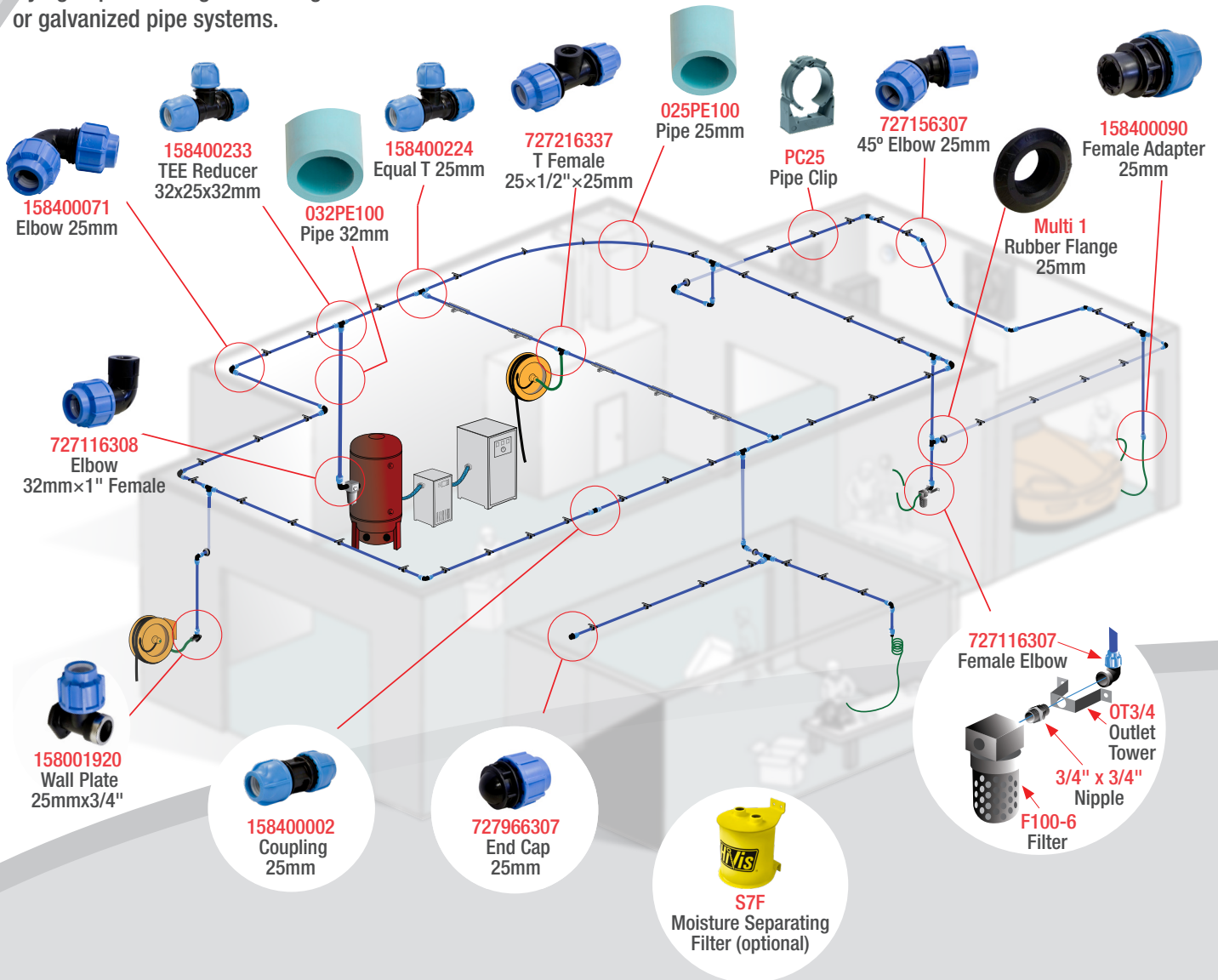
High Performance Compressed Air Pipe System

High-Density Polyethylene Compressed Air Pipe Systems are made of a high-performance ductile plastic tested to pass tough California OSHA standards. The plastic insulates your air supply from ambient air, much like insulation in a cooler. The temperature transfer that causes condensation to form in aluminum and iron pipe systems is substantially reduced, allowing you to reduce airborne moisture at all times.

HDPE pipe systems have a dramatically higher flow rate than any other system—the smooth interior allows 25-30% better flow than competing pipe systems. The low friction loss, high flow characteristics mean the air flows faster, which will help you maintain the CFM to do the job right. This translates into savings, as one of the highest costs in compressed air is often related to the friction losses when trying to push enough air through old-fashioned black iron or galvanized pipe systems.

HDPE pipe installation is simple and cost-effective as it requires no special tools. There are no threads to cut or joints to sweat, resulting in one-tenth the labor of black iron or copper pipes. Compared to aluminum pipe setups that require special drilling and cutting systems, HDPE pipe systems reduce labor times by half. Imagine a high-performance leak-free system set up in days, rather than weeks.

High-Density Polyethylene systems were originally designed for natural gas pipelines and are the pipe systems of choice for over 90% of all installations today across North America. Even when exposed to pressures exceeding 460 psi for 1000 hours or when struck by blunt objects under pressure, HDPE pipe maintains its integrity. HDPE pipe systems are the natural choice for compressed air safety and efficiency.





HDPE PIPE - in 6 meter (19.75 ft) lengths

025PE100	Pipe PE100 6m × 25mm (Flow Rate Equal to 1" Iron)	
032PE100	Pipe PE100 6m × 32mm (Flow Rate Equal to 1.5" Iron)	
040PE100	Pipe PE100 6m × 40mm (Flow Rate Equal to 2" Iron)	
063PE100	Pipe PE100 6m × 63mm (Flow Rate Equal to 3" Iron)	

	Couplings
158400002	Coupling 25mm
158400003	Coupling 32mm
158400004	Coupling 40mm
158400006	Coupling 63mm

	Elbows 90°
158400071	Elbow 90° 25mm
158400072	Elbow 90° 32mm
158400073	Elbow 90° 40mm
158400075	Elbow 90° 63mm

	Reducing Couplings
158400155	Reducing Coupling 32 – 25mm
727906347	Reducing Coupling 40 – 25mm
727906346	Reducing Coupling 40 – 32mm
727906356	Reducing Coupling 63 – 32mm
727906357	Reducing Coupling 63 – 40mm

	Corner Outlet Elbows
158001012	Elbow 90° with 1/2" female port 25mm
158001013	Elbow 90° with 1/2" female port 32mm
158001014	Elbow 90° with 3/4" female port 32mm

	Female Adapters (For Male thread, use Common pipe nipples in Brass, Stainless or galvanized)
158400090	Female Adapter 25mm × 1/2"
727916307	Female Adapter 25mm × 3/4"
727916336	Female Adapter 25mm × 1"
727916341	Female Adapter 32mm × 3/4"
158400094	Female Adapter 32mm × 1"
727916346	Female Adapter 40mm × 1"
158400097	Female Adapter 40mm × 1-1/4"
158400098	Female Adapter 40mm × 1-1/2"
158400104	Female Adapter 63mm to 2"
158400105	Female Adapter 63mm to 2-1/2"

	Female Elbows (For Male thread, use Common pipe nipples in Brass, Stainless or galvanized)
727116337	Elbow 90° with female offtake 25mm × 1/2"
727116307	Elbow 90° with female offtake 25mm × 3/4"
727116336	Elbow 90° with female offtake 25mm × 1"
727116342	Elbow 90° with female offtake 32mm × 1/2"
727116341	Elbow 90° with female offtake 32mm × 3/4"
727116308	Elbow 90° with female offtake 32mm × 1"
727116347	Elbow 90° with female offtake 40mm × 3/4"
727116346	Elbow 90° with female offtake 40mm × 1"
727116345	Elbow 90° with female offtake 40mm × 1-1/2"
727116311	Elbow 90° with female offtake 63mm x 2"

	Tee Equal
158400224	Tee Equal 25mm
158400225	Tee Equal 32mm
727206309	Tee Equal 40mm
158400228	Tee Equal 63mm

	Composite Wall Plate
158001920	Wall Plate – Composite 25mm × 3/4"

	Tee Reducers
158400233	Tee 90° Reducing/Increasing 32-25-32mm
727206338	Tee 90° Reducing/Increasing 25-32-25mm
158400234	Tee 90° Reducing/Increasing 40-32-40mm
727206357	Tee 90° Reducing/Increasing 63-32-63mm


	End Caps
727966307	End Cap 25mm
727966308	End Cap 32mm
727966309	End Cap 40mm
158400084	End Cap 63mm


	Tee Female (For Male thread, use Common pipe nipples in Brass, Stainless or galvanized)
158400179	Tee 90° w/ thd. fem. offtake 25mm × 1/2" × 25mm
727216307	Tee 90° w/ thd. fem. offtake 25mm × 3/4" × 25mm
727216342	Tee 90° w/ thd. fem. offtake 32mm × 1/2" × 32mm
727216341	Tee 90° w/ thd. fem. offtake 32mm × 3/4" × 32mm
727216308	Tee 90° w/ thd. fem. offtake 32mm × 1" × 32mm
727216347	Tee 90° w/ thd. fem. offtake 40mm × 3/4" × 40mm
727216346	Tee 90° w/ thd. fem. offtake 40mm × 1" × 40mm
727216345	Tee 90° w/ thd. fem. offtake 40mm × 1-1/2" × 40mm


	Elbows 45°
727156307	Elbow 45° 25mm
727156308	Elbow 45° 32mm
727156309	Elbow 45° 40mm


	Male Adapter
727926347	40mm x 2" Male Adapter


High Performance Compressed Air Pipe System (cont.)

	Reducing Kits - 158 Series Adapters
158400306	Reducing Kit 32 – 25mm
158400308	Reducing Kit 40 – 25mm
158400309	Reducing Kit 40 – 32mm
158400315	Reducing Kit 63 – 40mm

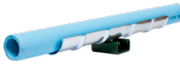
	Reducing Kits - 727 Series Adapters
727826432	Reducing Kit 32 – 25mm
727826435	Reducing Kit 40 – 32mm
727826441	Reducing Kit 63 – 40mm

	Copper Conversion Kits
727826401	Conv. kit, 25mm nut x 22mm O/D copper pipe
727826402	Conv. kit, 32mm nut x 28mm O/D copper pipe


	Pipe Clips
PC25	Closed Pipe Clip – Suit 25mm Pipe
PC32	Closed Pipe Clip – Suit 32mm Pipe
PC40	Closed Pipe Clip – Suit 40mm Pipe
PC63	Closed Pipe Clip – Suit 63mm Pipe

	Outlet Towers*
OT3/4	Outlet tower – 3/4"*
TOT3/4	Twin outlet tower – 3/4"*


*For use with combination of 25mm x 3/4", or 32mm x 3/4" Tee Females
RB3/4 x 1/2"

	Pipe Saddles
SD150-ZS	Pipe saddle suits 25 – 32mm pipe
SD200-ZS	Pipe saddle suits 40mm pipe

	Sealing Tape
BLUE MONSTER	Recommended for all threaded connections to brass, black iron, copper, galvanized pipe, fittings or nipples

	Assembly Wrenches
158400097	Assembly Wrench 20 – 40mm
799198098	Assembly Wrench 63mm

	Pipe Cutter
72355	Ratcheting Pipe Cutter 25 – 40mm

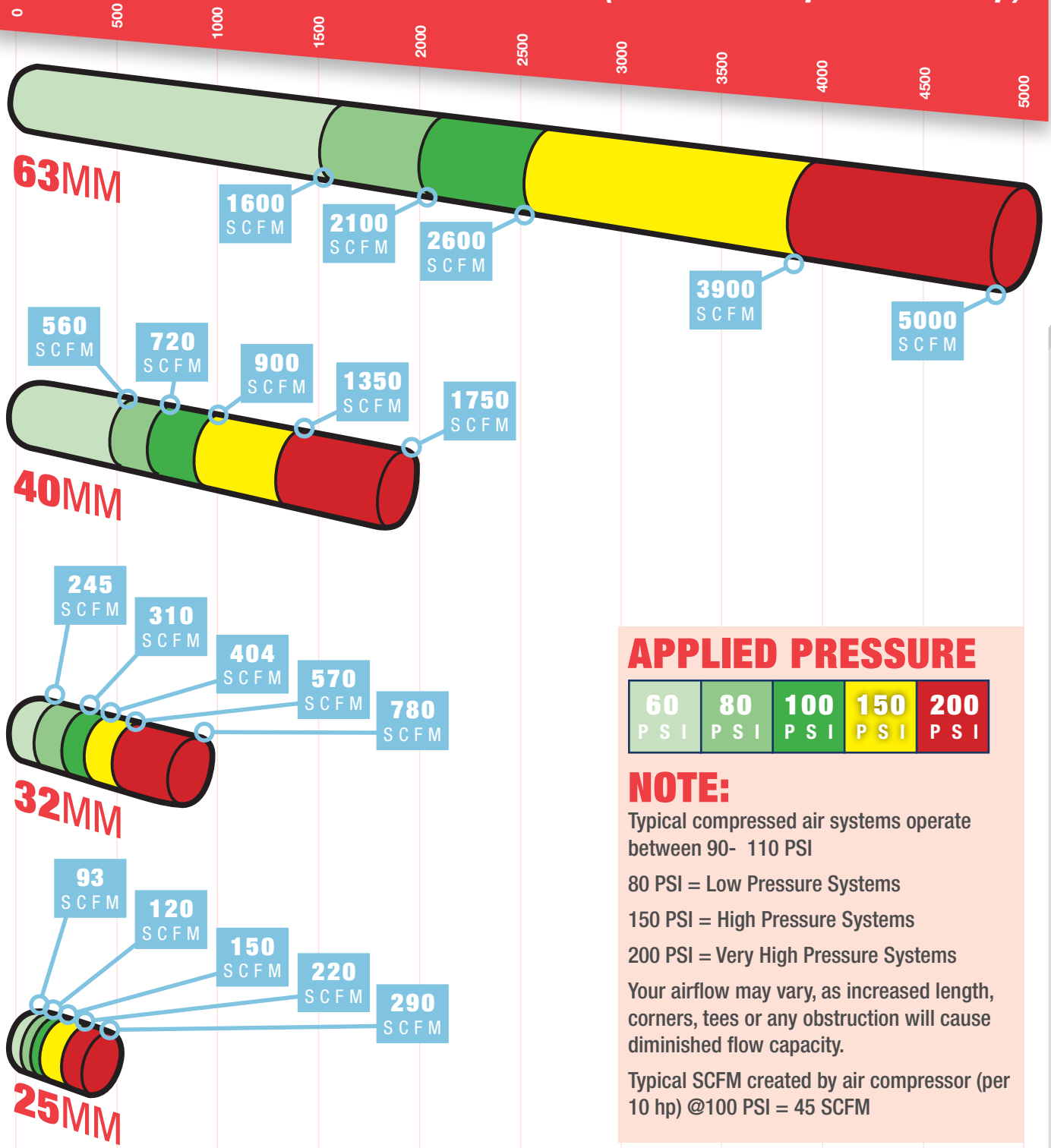
	Rubber Flanges for Screw Cases, Brick / Concrete Walls Etc.
MULTI 1	Multi Seal, Pipe/Hose O/D up to 27mm Hole Required 31.7mm
MULTI 2	Multi Seal, Pipe/Hose O/D up to 33mm Hole Required 44.4mm





AIR FLOW PER 100 FT OF STRAIGHT PIPE

(Includes 5% pressure drop)



APPLIED PRESSURE

60	80	100	150	200
PSI	PSI	PSI	PSI	PSI

NOTE:

Typical compressed air systems operate between 90- 110 PSI

80 PSI = Low Pressure Systems

150 PSI = High Pressure Systems

200 PSI = Very High Pressure Systems

Your airflow may vary, as increased length, corners, tees or any obstruction will cause diminished flow capacity.

Typical SCFM created by air compressor (per 10 hp) @100 PSI = 45 SCFM