



# ***Rammers & Tampers***

***Call Today to Order • 800-521-8104***



### MP-00G-NN Sand Rammer

Lightweight, streamlined design for better control and reduced operator fatigue. Hard, rapid hitting performance ideal for refractory sand work. Additional rubber butts in 1-1/2" or 2-1/2" diameter and 3-1/4" steel butts available.

Butt Diameter	Taper	Bore	Stroke	Blows Per Minute	Length	Weight	Air Inlet Thread	Rec'd Hose Size	Avg. Air Consumption
1-3/4" Rubber	S	11/16"	2"	1600	11-3/4"	3.75 lbs	3/8"	3/8"	12 cfm



### MP-0B Sand Rammer

Lightweight, rugged construction delivers fast hitting performance. Lower operator fatigue. Additional rubber butts in 1-3/4" to 5" diameter and steel butts available.

Butt Diameter	Taper	Bore	Stroke	Blows Per Minute	Length	Weight	Air Inlet Thread	Rec'd Hose Size	Avg. Air Consumption
2-3/8" Rubber	802	1"	2"	2500	16-1/2"	6.65 lbs	1/4"	3/8"	15 cfm



MP-BD2BA

### MP-BD Series Sand Rammers

Most popular bench rammer manufactured. Power-to-weight ratio exceeds all others in its class. Additional rubber butts available in 1-3/4" to 5" diameter and steel butts available.

Model	Butt Diameter	Taper	Bore	Stroke	Blows Per Minute	Length	Weight	Air Inlet Thread	Rec'd Hose Size	Avg. Air Consumption
MP-BD2BA	2-3/8" Rubber	802	1"	2-1/2"	1725	16-1/4"	7.125 lbs	3/8"	1/2"	15 cfm
MP-BD1BA	2-3/8" Rubber	802	1"	4"	1240	20-1/4"	10 lbs	3/8"	1/2"	19 cfm



### MP-130-BS Sand Rammer - with Butt Screw

Lightweight, durable design for better control and reduced operator fatigue. Unique double action seal protects tool from debris. Ideal for refractory sand work. Additional rubber butts available from 1-3/4" to 5" diameter and steel butts available.

Butt Diameter	Taper	Bore	Stroke	Blows Per Minute	Length	Weight	Air Inlet Thread	Rec'd Hose Size	Avg. Air Consumption
2-3/8"	801	1"	2-1/2"	870	21-1/2"	11.5 lbs	1/4"	3/8"	14 cfm





MP-B401MR



TX-00203  
3/8"-24 Thread  
Butt Screw

## B401 Series

### Corner Rammers - with Butt Screw

Strong and lightweight with a single reciprocating piston and grip ring throttle. Delivers a rapid compacting action which effectively rams refractory material and sand in hard-to-reach areas. Additional rubber butts also available in 1-3/4" to 3-1/4" diameter.

Model	Butt Diameter	Taper	Bore	Stroke	Blows Per Minute	Height	Length	Weight	Air Inlet Thread	Rec'd Air Hose	Avg. Air Consumption
MP-B401MR	2-3/8" Rubber	802	1-3/16"	9/16"	3500	3-5/16"	19-1/4"	4.6 lbs	3/8"	3/8"	14 cfm
MP-B401MR-1-1/2	1-1/2" Rubber	802	1-3/16"	9/16"	3500	3-5/16"	19-1/4"	4.6 lbs	3/8"	1/2"	14 cfm



## OBC-B3

### Corner Rammer - with Butt Screw

The small compact design is ideal for tight quarters and hard-to-reach areas. Quickly compacts refractory material. Includes 202-802SP 2-3/8" Rubber Butt. Additional rubber butts also available in 1-3/4" to 3-1/4" diameter.

Butt Diameter	Taper	Bore	Stroke	Blows Per Minute	Length	Weight	Air Inlet Thread	Rec'd Hose Size	Avg. Air Consumption
2-3/8" Rubber	802	1-3/16"	1"	6000	10"	5.5 lbs	3/8"	1/2"	20 cfm



TX-00203  
3/8"-24 Thread  
Butt Screw



## MP-BD2BA-LR

### Long Reach Rammer

Popular rammer with power-to-weight ratio exceeding others in its class. Identical to the original Master Power and Black & Decker tools. Additional rubber butts also available in 3-1/4" to 5" diameter.

Butt Diameter	Taper	Bore	Stroke	Blows Per Minute	Length	Weight	Air Inlet Thread	Rec'd Hose Size	Avg. Air Consumption
2-3/8" Rubber	802	1"	2-1/2"	1725	42-5/16"	16.25 lbs	1/2"	1/2"	15 cfm



MP-241C1M

MP-241A1M

## MP-241 Series

### Sand Rammers/Tampers

Easy to hold from a standing position. Perfect for compacting large molds. Additional rubber butts also available in 3-1/4" to 5" diameter.

Model	Butt Diameter	Taper	Bore	Stroke	Blows Per Minute	Length	Weight	Air Inlet Thread	Rec'd Air Hose	Avg. Air Consumption	Butt Screw
MP-241C1M	3-1/4" Rubber	803	1-5/16"	4"	1590	24"	16.0 lbs	3/8"	3/8"	29 cfm	TX-00203
MP-241A1M	3-1/4" Rubber	803	1-5/16"	4"	1590	52-1/2"	26.0 lbs	1/2"	1/2"	29 cfm	TX-00203

## Rubber Rammer Butts

Made of the finest neoprene to ensure uniformity of bonding. Highly resistant to oil and wear. Please specify tool model number and size of butt when ordering. Solid aluminum, steel and rectangular butts available.



**201**  
1-3/4" Dia.

Part No.	Taper
201-S	S
201-M	M
201-ML	ML
201-801	801
201-802	802
201-803	803



**202**  
2-3/8" Dia.

Part No.	Taper
202-S	S
202-M	M
202-ML	ML
202-L	L
202-801	801
202-802	802
202-803	803



**203**  
3-1/4" Dia.

Part No.	Taper
203-S	S
203-M	M
203-ML	ML
203-L	L
203-801	801
203-802	802
203-803	803



**204**  
4" Dia.

Part No.	Taper
204-M	M
204-ML	ML
204-L	L
204-801	801
204-802	802
204-803	803



**205**  
5" Dia.

Part No.	Taper
205-M	M
205-ML	ML
205-L	L
205-801	801
205-802	802
205-803	803

S Taper	M Taper	ML Taper	L Taper	801 Taper	802 Taper	803 Taper
MP-00G NPK B-00A JET 00, 00T	NPK B-0A JET 0, 0T, 1, 1T	MP-F1 NPK B-1A, F1	NPK F2 JET BB02	MP-130 IR 130, 140, 150 CP 4710, 4711	MP-0B, BD2BA, BD1BA Master Power 1BA, 2BA B&D 5200, 5205 Cleco 0B, 1B, 1F TX-70B, TX8-2, TX8-4	IR 24, 241 Master Power 1F, 2F Cleco # 4 Series B&D 5210, 5215

## Specialty Rammer Butts with Screw Holes

Primarily used on MP-0B, BD2BA and BD1BA Series rammers with butt retainer screw. MPT is the only company that machines our piston to accommodate retainer bolt screws.

### Rubber



**201**  
1-3/4" Dia.

Part No.	Taper
201-801SP	801



**202**  
2-3/8" Dia.

Part No.	Taper
202-802SP	802
202-803SP	803



**203**  
3-1/4" Dia.

Part No.	Taper
203-801SP	801
203-802SP	802
203-803SP	803

### Brass



**202-802SP-BR**  
2-1/2" Dia. Brass

Part No.	Taper
202-802SP-BR	802

### Nylon



**202-802SP-NY**  
2-1/2" Dia. Nylon

Part No.	Taper
202-802SP-NY	802

Note: Butt Retainer Screw 130SR-85 fits 801 Taper. Butt Retainer Screw TX-00203 fits 802 & 803 Taper.

## Butt Retaining Screws

Designed to retain 801, 802 and 803 series butts to the piston.



**130SR-85**  
Fits 801 Taper



**TX-00203**  
Fits 802 & 803 Taper

Butt Screw Part No.	Thread	Tool Model
130SR-85	5/16"-18	MP-130
TX-00203	3/8"-24	MP-0B, MP-BD1BA, MP-BD2BA, MP-241



## Steel Rammer Butts



**150-801**  
1-1/2" Steel  
801 Taper



**200-801-BS**  
2" Steel  
801 Taper  
Screw-Type



**250-801-BS**  
2-1/2" Steel  
801 Taper  
Screw-Type



**10SR-93**  
3/4" x 2" Steel  
801 Taper

Part No.	Taper
150-801	801
200-801-BS	801
250-801-BS	801
10SR-93	801



**200-802**  
2" Steel  
802 Taper



**200-802-BS**  
2" Steel  
802 Taper  
Screw-Type



**300-802**  
3" Steel  
802 Taper



**300-802-SP**  
3" Steel  
802 Taper  
Screw-Type

Part No.	Taper
200-802	802
300-802	802
300-802-SP	802



**300-803SP**  
3" Steel  
803 Taper  
Screw-Type



**300-803**  
3" Steel  
803 Taper  
Screw-Type



**241SR-3IN**  
3" Steel  
803 Taper

Part No.	Taper
300-803SP	803
300-803	803
241SR-3IN	803
F53000D700-SPL	L

## Aluminum Rammer Butts



**275A-802**  
2-1/2" Aluminum  
802 Taper



**2009-SA802**  
2-1/2" Aluminum  
802 Taper



**241SR-3.0LP**  
3" Aluminum  
803 Taper  
Screw-Type



**241SR-3.0-2.0**  
Domed Aluminum  
803 Taper  
Screw-Type

Part No.	Taper
275A-802	802
2009-SA802	802
241SR-3.0LP	803
241SR-3.0-2.0	803

## Aluminum with Rubber Tip Butts



**2010**  
2-3/8" Aluminum  
with Rubber Tip



**2515**  
3" Aluminum with  
Rubber Tip



**3525**  
3/4" x 2-3/8"  
Aluminum with  
Rubber Tip



**4030**  
1" x 2-7/8"  
Aluminum with  
Rubber Tip

Part No.	Taper
2010-801	801
2010-802	802
2010-803	803

Part No.	Taper
2515-802	802
2515-803	803

Part No.	Taper
3525-S	S
3525-M	M
3525-ML	ML
3525-801	801
3525-802	802

Part No.	Taper
4030-M	M
4030-ML	ML
4030-802	802
4030-803	803

## Butt Retaining Screws

Designed to retain 801, 802 and 803 series butts to the piston.



**130SR-85**



**TX-00203**

Part No.	Thread	Tool Model
130SR-85	5/16"-18	MP-130
TX-00203	3/8"-24	MP-0B, MP-BD1BA, MP-BD2BA, MP-241

Call Today to Order • 800-521-8104

5-5

## Backfill Tampers

These backfill tampers represent the best in the industry. With hard-hitting power, these tools ensure dense compaction where support and erosion prevention is the priority. Suitable for compacting material in confined spaces, such as trenches, sewers, around poles and more. Steel kidney-shaped butt for firm tamping closely around poles is available. When equipped with rubber tamping butts, these tools are ideal for packing large molds in foundry applications.

See page 5-7 for T Taper butts available.

94558 Butt Screw



MP-6T



MP-7920



MP-341A1M

Model	Butt Diameter	Taper	Bore	Stroke	Blows Per Minute	Length	Weight	Air Inlet Thread	Rec'd Air Hose	Avg. Air Consumption	Butt Screw
MP-6T	5-3/4" Steel	T	1-1/2"	5-1/2"	750	49"	39.5 lbs	1/2"	1/2"	38 cfm	94558
MP-7920	5-3/4" Steel	T	1-1/2"	5-1/2"	800	44"	37.5 lbs	1/2"	1/2"	30 cfm	94558
MP-341A1M	5-3/4" Steel	T	1-5/8"	4"	1550	52"	35.0 lbs	1/2"	1/2"	29 cfm	94558

## MP-441A1M

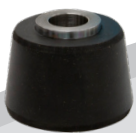
### Extra Heavy-Duty Backfill Tamper

The 441 Series is for heavy compaction jobs. The 2" bore is the largest on the market today. Comes equipped with 6" steel butt.

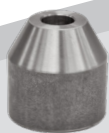
Butt Diameter	Taper	Bore	Stroke	Blows Per Minute	Length	Weight	Air Inlet Thread	Rec'd Air Hose	Avg. Air Consumption	Butt Screw
5-3/4" Steel	805	2"	4"	1750	50"	47 lbs	1/2"	1/2"	36 cfm	94558



### 805 Taper Butts for MP-441A1M only



203-441  
3-1/4" Rubber



3.00-441  
3" Steel



44SR-M183-5-34  
5-3/4" Steel



44SR-M183-AL  
5-3/4" Aluminum



94558  
Butt Screw



## T Taper Backfill Tamper Butts

These butts primarily fit larger backfill tampers that could be used for multiple purposes. Ideal for foundry, refractory, pool, rammed earthhomes, steel drum and mining applications.

### Rubber Butts



**203-T**  
3-1/4" Dia.



**F54000D700**  
3-1/2" Dia.



**204-T**  
4" Dia.



**205-T**  
5" Dia.

### Steel Butts



**34SR-2.750**  
2-3/4" Dia.  
Screw-Type



**34SR-ST183**  
3-3/8" Dia.  
Screw-Type



**34SR-ST183-DOMED**  
3-3/8" Dia.  
Screw-Type



**34SR-4.375**  
4-3/8" Dia.  
Screw-Type



**34ST-383**  
3" Dia.  
Screw-Type



**73206**  
5-3/4" Dia.  
Screw-Type

### Aluminum Butt



**73206-AL**  
5-3/4" Dia.  
Screw-Type

### Pole Tamp Butt



**5.250-M-78**  
Screw-Type

T Taper Butts also fit the following Brands and Model Nos.

Brand	Model	Brand	Model
Atlas Copco	TEX-640	Sullivan Palatek	SBT-6
APT	131, 132	Texas Pneumatic	6TN
Chicago Pneumatic	CP-0035	Thor	6T, 66T
Ingersoll Rand	34, 341, 792	TOKU	T6

### Other Aluminum Butts



**P089008**  
5" Aluminum  
Fits: CP3T



**P089006**  
Retaining Screw



**P089050**  
6-1/4" Aluminum  
Fits: CP4RV



**P089045**  
Retaining Screw

### Butt Retaining Screws

Designed to retain 801, 802 and 803 series butts to the piston.



**130SR-85**



**TX-00203**



**34SR-85**

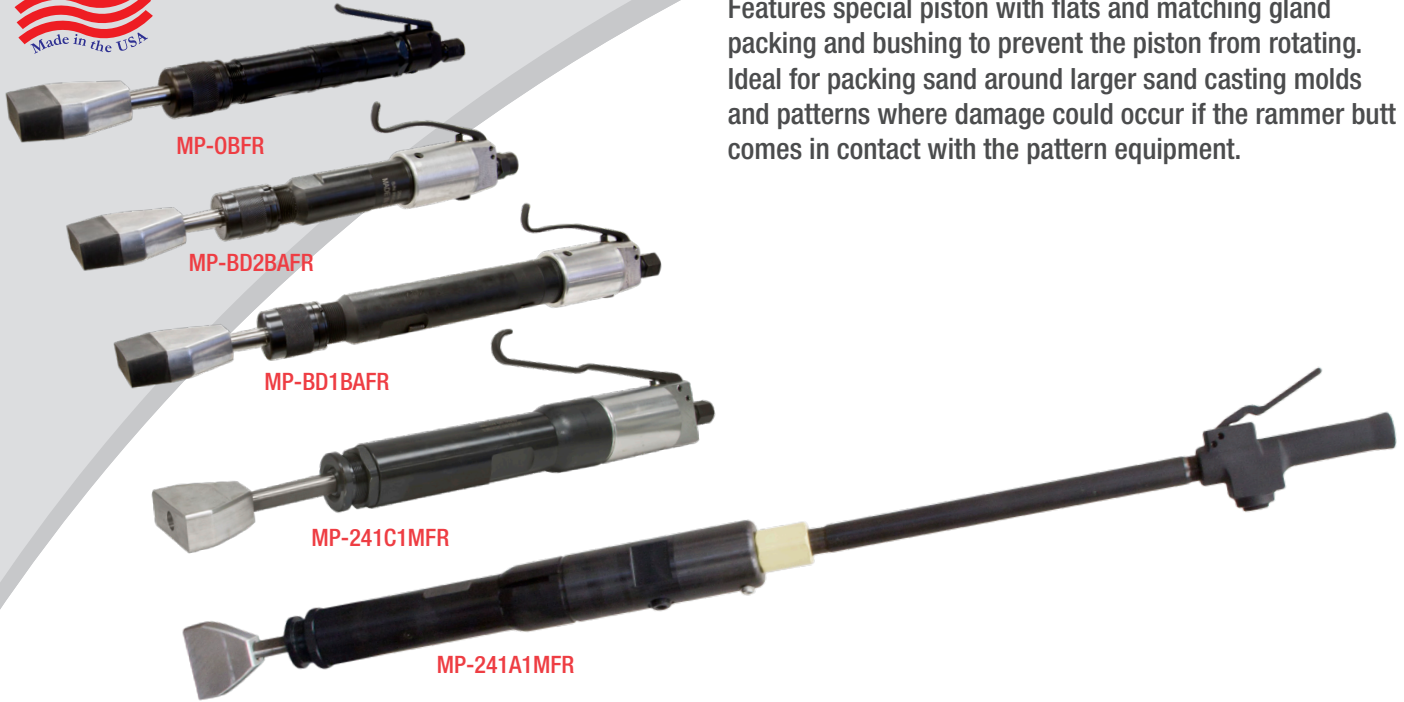


**94558**

Butt Screw Part No.	Thread	Tool Model
130SR-85	5/16"-18	MP-130
TX-00203	3/8"-24	MP-OB, MP-BD1BA, MP-BD2BA, MP-241
34SR-85	3/8"-24	IR-34, IR-341, APT131
94558	1/2"-13	MP-341, MP-441, MP-6T, MP-7920, IR-441

Call Today to Order • 800-521-8104

5-7



## Flat Rod Bench Rammers and Floor Rammers

Features special piston with flats and matching gland packing and bushing to prevent the piston from rotating. Ideal for packing sand around larger sand casting molds and patterns where damage could occur if the rammer butt comes in contact with the pattern equipment.

Model	Butt Diameter	Taper	Bore	Stroke	Blows Per Minute	Length	Weight	Air Inlet Thread	Rec'd Air Hose	Avg. Air Consumption	Butt Screw
MP-OBFR	3/4" x 2-3/8" Peen	802	1"	2"	2500	16-1/2"	6.65 lbs	1/4"	3/8"	15 cfm	
MP-BD2BAFR	1 x 2-7/8" Peen	802	1"	2-1/2"	1725	16-1/4"	7.125 lbs	3/8"	1/2"	15 cfm	
MP-BD1BAFR	1 x 2-7/8" Peen	802	1"	4"	1240	20-1/4"	10 lbs	3/8"	1/2"	19 cfm	
MP-241C1MFR	1-1/4 x 3" Peen	803	1-5/16"	4"	1590	24"	16.0 lbs	3/8"	3/8"	29 cfm	TX-00203
MP-241A1MFR	1-1/4 x 3" Peen	803	1-5/16"	4"	1590	52-1/2"	26.0 lbs	1/2"	1/2"	29 cfm	TX-00203

## Flat Rod Butts



**22-SR-93-34**  
Steel  
802 Taper  
7/8" x 3"



**4029-SA-802**  
Aluminum  
802 Taper  
1" x 2-7/8"



**241SR-1.25x3**  
Aluminum  
803 Taper  
1-1/4" x 3"  
Drilled for  
Butt Screw



**241SR-3X3X1.5-STEEL**  
Steel  
803 Taper  
1-1/2" x 3"  
Drilled for  
Butt Screw



**241SR-3x3x1.5**  
Aluminum  
803 Taper  
1-1/2" x 3"  
Drilled for  
Butt Screw

## Butt Retaining Screw

Designed to retain 802 and 803 series butts to the piston.



**TX-00203**

Part No.	Thread	Tool Model
TX-00203	3/8"-24	MP-OB, MP-BD1BA, MP-BD2BA, MP-241





## Throttle Handles

Throttle handles, also known as live handles, are designed to deliver air to a host of air tools. They can also be used to provide air to other devices. The throttle levers are self-closing for safety purposes.

### 1/2" NPT Inlet and 3/4" NPT Outlet

Designed for NPK tools

#### 033

Steel Throttle/Live Handle



3/4" NPT

### 1/2" NPT Inlet and 3/4" NPT Outlet

Fits all rammers and tampers with pipes having 3/4" NPT male threads

#### 24SR-A160

Brass Throttle/Live Handle



3/4" NPT

#### 241SR-A160-SAFETY

Throttle/Live Handle with two-step safety lever



3/4" NPT

#### 241SR-A160-E

Throttle/Live Handle



3/4" NPT

#### 241SR-A160G-SAFETY

Throttle/Live Handle with two-step safety lever and guard



3/4" NPT

#### 6500-N

Throttle/Live Handle  
Toku Style



3/4" NPT

### 3/8" NPT Inlet and 1/2" NPT Outlet

#### R147915

Fits: S1 Series, T3 Series,  
OBC-EXC1-C, MP-HS-1SC  
scalars



1/2" NPT

## Don't Forget Your Essential Air Tool Gear!

- High-Wear & Consumable Parts
- Air Tool Oil & In-Line Lubricators
- Air Hoses & Whip Hose Assemblies
- Portable FRL's & Moisture Separators
- Safety Lock Cables & Clips



Air Movers  
(Page 17-5)



Portable FRL's  
(Page 17-4)



Portable Moisture Separator  
(Page 17-3)

**Accessories**  
Pages 18-5 - 18-14

## Whip Hoses

### 1/2" Lubricator Whip Hose Assemblies

Model	Assembly Components			Air Flow @ 70 PSI
	Fitting to Tool	Hose	Lubricator	
MP-2HW-HDS	3/8" MPT	1/2" ID x 6 ft	0-R w/CP Fitting	30 cfm
MP-3HW-HDS	1/2" MPT			



### 1/2" Black Hydraulic Whip Hose Assemblies (300 psi)

Model	Assembly Components		
	Integral Swivel Fitting	Hose	Lubricator
2HW-HYD-OLF	3/8" MPT	1/2" ID x 6 ft	OL-F CP Fitting
3HW-HYD-OLF	1/2" MPT		



## Industrial Grade Air Hoses - with Fittings

- Maximum pressures 200/250/300 psi
- Heavy-duty double strand
- High tensile rayon cord
- Tough neoprene
- Oil resistant



Model	Hose ID	Hose OD	Length	Max. PSI	Fittings
AH-5	3/4"	1-5/32"	50 ft	300 psi	CP Fittings

Other sizes also available. All air hoses are industrial grade construction.

## Safety Lock Cables

Helps prevent injury due to broken hose connections. Spring-powered loops provide a firm grip on the hose. Bleed air pressure from hose before removing safety lock cable.



SLC1

Model	Cable Description (Dia x L)	Fits Hose OD
SLC1	1/8" x 20"	1/2" to 1-1/4"
SLC2	1/4" x 38"	1-1/2" to 3"

## Air Tool Oil

A specially formulated high grade lubricating oil for all piston and rotary-type air tools. Lubricates and rustproofs for longer tool life.

**OIL-080** – 4 Ounce (12 per case)

**OIL-085** – 1 Quart (6 per case)

**OIL-014** – 1 Gallon (4 per case)

