

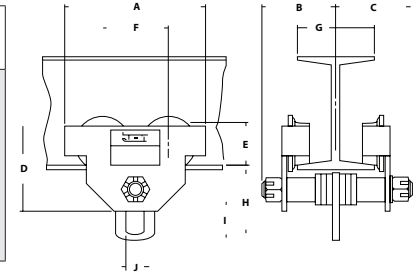
JET PT Series Industrial-Duty Plain Trolleys

- Designed for low maintenance and trouble-free operation through a wide range of beams
- 1/2 ton to 10-ton capacity
- For use with wide-flange H-beams, standard I-beams, or curved track
- Multiple spacer washers make beam flange width adjustment quick and easy
- Rugged steel side plates feature built-in bumper guards
- Hardened wheels with lubricated for life, double sealed ball bearings
- Proof tested with test certificate
- Compliance: OSHA, ANSI/ASME B30.11 and B30.17 standards



Stock No. 252015

Stock No.	Model	Capacity (Ton)	Beam Flange Width (In.)	Beam Height (Ft.)	Min. Radius Curve (In.)	Ship Weight (Lbs.)
252005	1/2 PT	1/2	2-1/2 – 8	4 – 19	39	20
252010	1 PT	1	3 – 8		39	34
252015	1-1/2 PT	1-1/2	3-1/4 – 8		43	43
252020	2 PT	2	3-1/4 – 8		43	52
252030	3 PT	3	4 – 8		51	88
252050	5 PT	5	4-5/6 – 8		55	129
252060	10 PT	10	4-3/4 – 8		67	213



Dimensions (In.)

Model	A	B	C	D	E	F	G	H	I	J
1/2 PT	8-3/8"	6-3/16"	6-3/16"	5-1/8"	2-5/16"	4"	2-1/2" – 8	4"	1-9/16"	15/16"
1 PT	9-15/16"	6-1/2"	6-1/2"	6-1/8"	2-15/16"	4-5/8"	3" – 8	4-1/2"	1-15/16"	1-3/16"
1-1/2 PT	10-7/8"	6-5/8"	6-5/8"	6-3/8"	3-3/8"	4-7/8"	3-1/4" – 8	5-1/8"	2-1/2"	1-5/16"
2 PT	11-7/8"	6-7/8"	6-7/8"	6-11/16"	3-9/16"	5-3/8"	3-1/4" – 8	5-1/4"	2-9/16"	1-7/16"
3 PT	13-5/8"	7-5/16"	7-5/16"	8-9/16"	4-5/16"	6-3/16"	4" – 8	6-5/8"	3"	1-3/4"
5 PT	15-1/16"	7-7/8"	7-7/8"	10-1/16"	4-13/16"	6-3/4"	4-5/8" – 8	7-7/8"	3-13/16"	2-3/8"
10 PT	17-15/16"	8-1/2"	8-1/2"	11-5/8"	5-15/16"	7-7/8"	4-3/4" – 8	10-1/8"	5"	3-1/4"

JET SBC Series Industrial-Duty Beam Clamps

- For construction, commercial and industrial vertical or horizontal rigging operations
- 1-ton to 5-ton capacities
- Mount hoists or lift beams with portable lightweight clamp
- Adjusts with ease to fit a broad range of wide-flange H or standard I-beams
- Clamp jaw designed to distribute the load away from beam flange edge
- Low headroom with built-in suspension rod
- Proof tested with test certificate
- Compliance: ANSI/ASME B30.17 and B30.20 standards

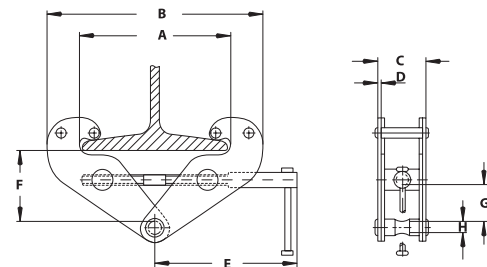


Stock No. 252720

CAUTION

Read owners manual for additional warnings and precautions before use. Failure to read, understand and follow all instructions can result in serious injury. Do not exceed rated capacity. Use clamp only if authorized and properly trained. Do not move unbalanced load. Not for use in explosive environment.

Stock No.	Model	Capacity (Lbs.)	Beam Flange Width (In.)	Ship Weight (Lbs.)
252710	JBC-1	2000	2-31/32-8-21/32	12 lbs.
252720	JBC-2	4000	2-31/32-8-21/32	14 lbs.
252730	JBC-3	6000	3-15/16-9-2/32	27 lbs.
252750	JBC-5	10000	4-15/16-10-5/8	34 lbs.



Dimensions (In.)

Model	Dim. (In.) Max A	Min B	Max. B	C	D	E	Max. F	Min. F	Min. G	H
JBC-1	9-21/32	7-3/32	14-11/64	2-3/4	13/64	9-9/32	5-5/16	3-35/64	1-3/16	13/16
JBC-2	9-21/32	7-3/32	14-11/64	2-29/32	1/4	9-9/32	5-5/16	3-35/64	1-3/16	13/16
JBC-3	11-5/8	9-27/32	17-11/32	4/-21/32	5/16	10-1/4	6-11/16	4-11/32	2-11/64	1
JBC-5	11-7/32	10-7/16	19-3/32	5-1/2	25/64	10-1/4	6-15/16	4-15/16	2-3/64	1-7/64