



**MICHIGAN PNEUMATIC TOOL**

THE ARSENAL *of* INDUSTRY

# SUPER NEEDLE SCALER ATTACHMENT KIT

**SNS**

## Part No. K2LR-SNS-KIT



When traditional size scalers are not robust enough for heavy duty industrial applications look no further than the Super Needle Scaler Attachment Kit.

This meticulously engineered needle scaler attachment fits a range of pneumatic tools. Retro-fit your favorite tool, or start fresh with a complete tool and attachment. Move more material in a shorter amount of time and get the job done, on time.



*Visit Us at [michiganpneumatic.com](http://michiganpneumatic.com) or Call Us Today 800-521-8104 to Get Yours...*



## M4BLT-R-SNS



Stroke	2.6"
Bore	1.1"
BPM	2750
Length	19"
Weight	9.1 lbs
Air Inlet Thread	3/8"
Rec'd Hose Size	1/2"
Avg. Air Consumption	20 cfm

## M4BLT-R-ITD-SNS



Stroke	2.6"
Bore	1.1"
BPM	2750
Length	20-3/4"
Weight	12 lbs
Air Inlet Thread	3/8"
Rec'd Hose Size	1/2"
Avg. Air Consumption	20 cfm

## K2LR-RET-SNS



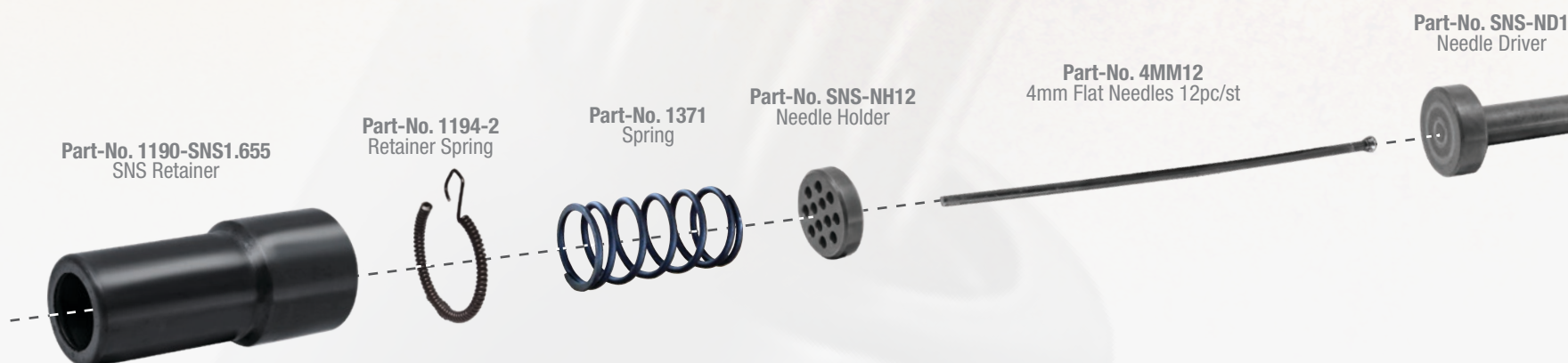
Stroke	1-3/4"
Bore	7/8"
Blows Per Minute	3600
Length	19"
Weight	9 lbs
Air Inlet Thread	3/8"
Rec'd Hose Size	1/2"
Avg. Air Consumption	16 cfm

## K2LR-D-SNS



Stroke	1-3/4"
Bore	7/8"
BPM	3600
Length	19"
Weight	10.5 lbs
Air Inlet Thread	3/8"
Rec'd Hose Size	1/2"
Avg. Air Consumption	16 cfm

## K2LR-SNS-KIT



12082025Rev1MME | BA | MF

*Visit Us at [michiganpneumatic.com](http://michiganpneumatic.com) or Call Us Today 800-521-8104 to Get Yours...*