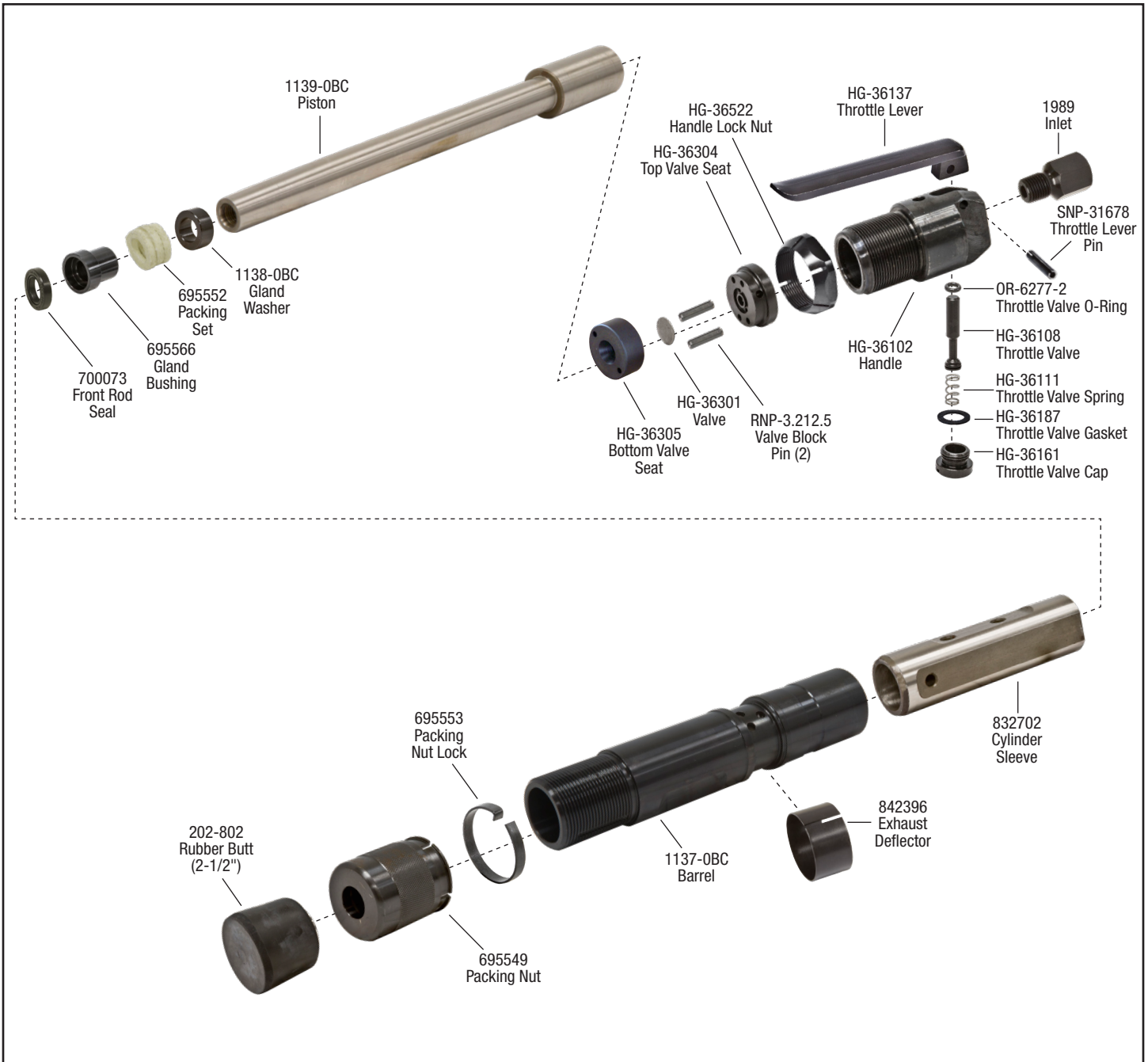




**MICHIGAN PNEUMATIC TOOL, INC.**

# MP-OB Bench Rammer





**Rubber Rammer Butts**

Made of the finest neoprene to ensure uniformity of bonding. Highly resistant to oil and wear. Please specify tool model number and size of butt when ordering. Solid aluminum, steel and rectangular butts available.



**201**  
1-3/4" Dia.



**202**  
2-3/8" Dia.



**203**  
3-1/4" Dia.



**204**  
4" Dia.



**205**  
5" Dia.

| 802 Taper             |  |
|-----------------------|--|
| MP-OB, BD2BA, BD1BA   |  |
| Master Power 1BA, 2BA |  |
| B&D 5200, 5205        |  |
| Cleco OB, 1B, 1F      |  |
| TX-70B, TX8-2, TX8-4  |  |

| Part No. | Taper |
|----------|-------|
| 201-802  | 802   |

| Part No. | Taper |
|----------|-------|
| 202-802  | 802   |

| Part No. | Taper |
|----------|-------|
| 203-802  | 802   |

| Part No. | Taper |
|----------|-------|
| 204-802  | 802   |

| Part No. | Taper |
|----------|-------|
| 205-802  | 802   |

**Butt Retaining Screws**

Designed to retain 801, 802 and 803 series butts to the piston.



130SR-85



TX-00203

| Butt Screw Part No. | Thread   | Tool Model                        |
|---------------------|----------|-----------------------------------|
| 130SR-85            | 5/16"-18 | MP-130                            |
| TX-00203            | 3/8"-24  | MP-OB, MP-BD1BA, MP-BD2BA, MP-241 |

**Steel Rammer Butts**



**200-802**  
2" Steel  
802 Taper



**200-802-BS**  
2" Steel  
802 Taper  
Screw-Type



**300-802**  
3" Steel  
802 Taper



**300-802-SP**  
3" Steel  
802 Taper  
Screw-Type

| Part No.   | Taper |
|------------|-------|
| 200-802    | 802   |
| 300-802    | 802   |
| 300-802-SP | 802   |

**Specialty Rammer Butts with Screw Holes**

Primarily used on MP-OB, BD2BA and BD1BA Series rammers with butt retainer screw. MPT is the only company that machines our piston to accommodate retainer bolt screws.

**Rubber**



**202**  
2-3/8" Dia.



**203**  
3-1/4" Dia.

**Brass**



**202-802SP-BR**  
2-1/2" Dia. Brass

**Nylon**



**202-802SP-NY**  
2-1/2" Dia. Nylon

| Part No.  | Taper |
|-----------|-------|
| 202-802SP | 802   |

| Part No.  | Taper |
|-----------|-------|
| 203-802SP | 802   |

| Part No.     | Taper |
|--------------|-------|
| 202-802SP-BR | 802   |

| Part No.     | Taper |
|--------------|-------|
| 202-802SP-NY | 802   |

**Aluminum with Rubber Tip Butts**



**2010**  
2-3/8" Aluminum  
with Rubber Tip



**2515**  
3" Aluminum with  
Rubber Tip



**3525**  
3/4" x 2-3/8"  
Aluminum with  
Rubber Tip



**4030**  
1" x 2-7/8"  
Aluminum with  
Rubber Tip

**Aluminum Rammer Butts**



**275A-802**  
2-1/2" Aluminum  
802 Taper



**2009-SA802**  
2-1/2" Aluminum  
802 Taper

| Part No. | Taper |
|----------|-------|
| 2010-802 | 802   |

| Part No. | Taper |
|----------|-------|
| 2515-802 | 802   |

| Part No. | Taper |
|----------|-------|
| 3525-802 | 802   |

| Part No. | Taper |
|----------|-------|
| 4030-802 | 802   |

| Part No.   | Taper |
|------------|-------|
| 275A-802   | 802   |
| 2009-SA802 | 802   |