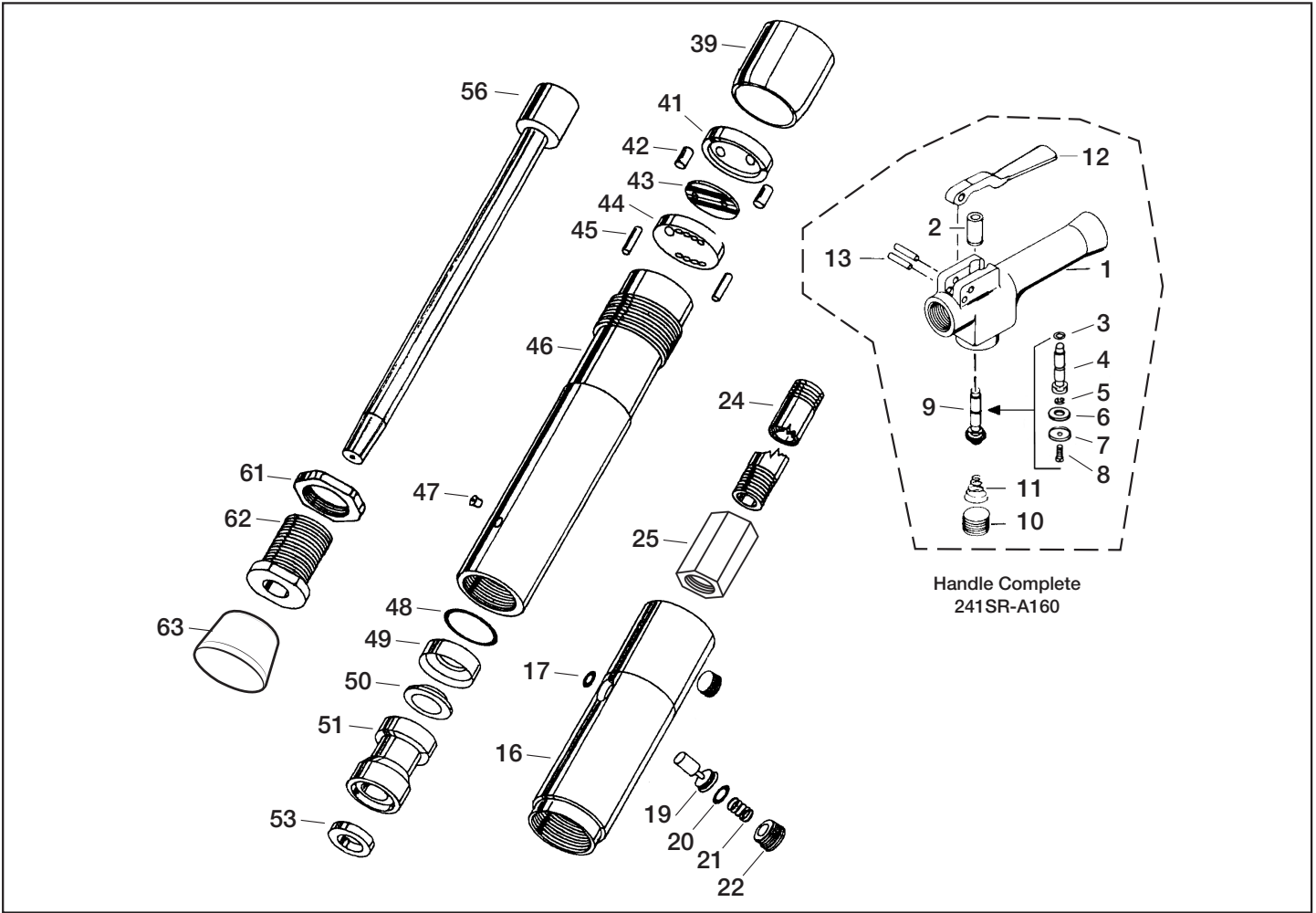




MICHIGAN PNEUMATIC TOOL, INC.

MP-241A1M Floor Tamper



Index	Part No.	Description	Qty.
1	150SR-160	Bare Handle	1
2	150SR-503	Throttle Valve Bushing	1
3	OR-6227-5	O-Ring	1
4	150SR-302-IC	Valve	1
5	H54U-352	Washer	1
6	MT4-159	Gasket	1
7	R4-157	Plate	1
8	4U-359	Screw	1
9	150SR-302	Valve Assembly	1
10	DLC-165	Throttle Valve Plug	1
11	150SR-262	Throttle Valve Spring	1
12	33SR-163	Throttle Lever	1
13	5040T-962	Handle Pins	2
16	241SR-14	Oiler Type Backhead Complete	1
17	R18L-14	Lubricator Valve Seal	1
18	RØH-377	Oil Plug	1
19	241SR-101	Lubricator Valve	1
20	RØAR-210	Lubricator Valve Face	1
21	24SR-106	Valve Spring	1
22	HH-266	Lubricator Valve Plug	1

Index	Part No.	Description	Qty.
24	34SR-1A	Extension Pipe 19"	1
25	241SR-118	Lock Nut	1
39	241SR-23	Exhaust Deflector	1
41	24SR-43	Valve Chest Lid	1
42	33SR-45	Valve Dowel	2
43	24SR-40	Valve	1
44	241SR-41	Valve Chest	1
45	NP-6.325.5	Cylinder Dowel	2
46	241SR-R10	Cylinder, Round Rod	1
47	130SR-188	Grease Fitting	1
48	FMD2-198	Seal Support Gasket	1
49	241SR-28	Seal Support	1
50	241SR-30	Rear Rod Seal	1
51	241SR-A32A	Piston Rod Guide	1
53	241SR-31	Rod Front Seal	1
56	241SR-R20	Piston, 0.803 Taper	1
61	241SR-17	Lock Nut	1
62	241SR-33A	Retainer Guide	1
63	203-803	3 1/4" Rubber Butt (.803)	1



MICHIGAN PNEUMATIC TOOL, INC.

Rubber Rammer Butts

Made of the finest neoprene to ensure uniformity of bonding. Highly resistant to oil and wear. Please specify tool model number and size of butt when ordering. Solid aluminum, steel and rectangular butts available.



201
1-3/4" Dia.



202
2-3/8" Dia.



203
3-1/4" Dia.



204
4" Dia.



205
5" Dia.

Part No.	Taper
201-803	803

Part No.	Taper
202-803	803

Part No.	Taper
203-803	803

Part No.	Taper
204-803	803

Part No.	Taper
205-803	803

803 Taper
IR 24, 241
Master Power 1F, 2F
Cleco # 4 Series
B&D 5210, 5215

Butt Retaining Screws

Designed to retain 801, 802 and 803 series butts to the piston.



130SR-85



TX-00203

Butt Screw Part No.	Thread	Tool Model
130SR-85	5/16"-18	MP-130
TX-00203	3/8"-24	MP-OB, MP-BD1BA, MP-BD2BA, MP-241

Steel Rammer Butts



300-803SP
3" Steel
803 Taper
Screw-Type



300-803
3" Steel
803 Taper
Screw-Type



241SR-3IN
3" Steel
803 Taper

Part No.	Taper
300-803SP	803
300-803	803
241SR-3IN	803
F53000D700-SPL	L

Specialty Rammer Butts with Screw Holes

Primarily used on MP-OB, BD2BA and BD1BA Series rammers with butt retainer screw. MPT is the only company that machines our piston to accommodate retainer bolt screws.

Rubber



202
2-3/8" Dia.



203
3-1/4" Dia.

Part No.	Taper
202-803SP	803

Part No.	Taper
203-803SP	803

Aluminum with Rubber Tip Butts

Aluminum Rammer Butts



2010
2-3/8" Aluminum
with Rubber Tip



2515
3" Aluminum with
Rubber Tip



4030
1" x 2-7/8"
Aluminum with
Rubber Tip



241SR-3.0LP
3" Aluminum
803 Taper
Screw-Type



241SR-3.0-2.0
Domed Aluminum
803 Taper
Screw-Type

Part No.	Taper
241SR-3.0LP	803
241SR-3.0-2.0	803

Part No.	Taper
2010-803	803

Part No.	Taper
2515-803	803

Part No.	Taper
4030-803	803