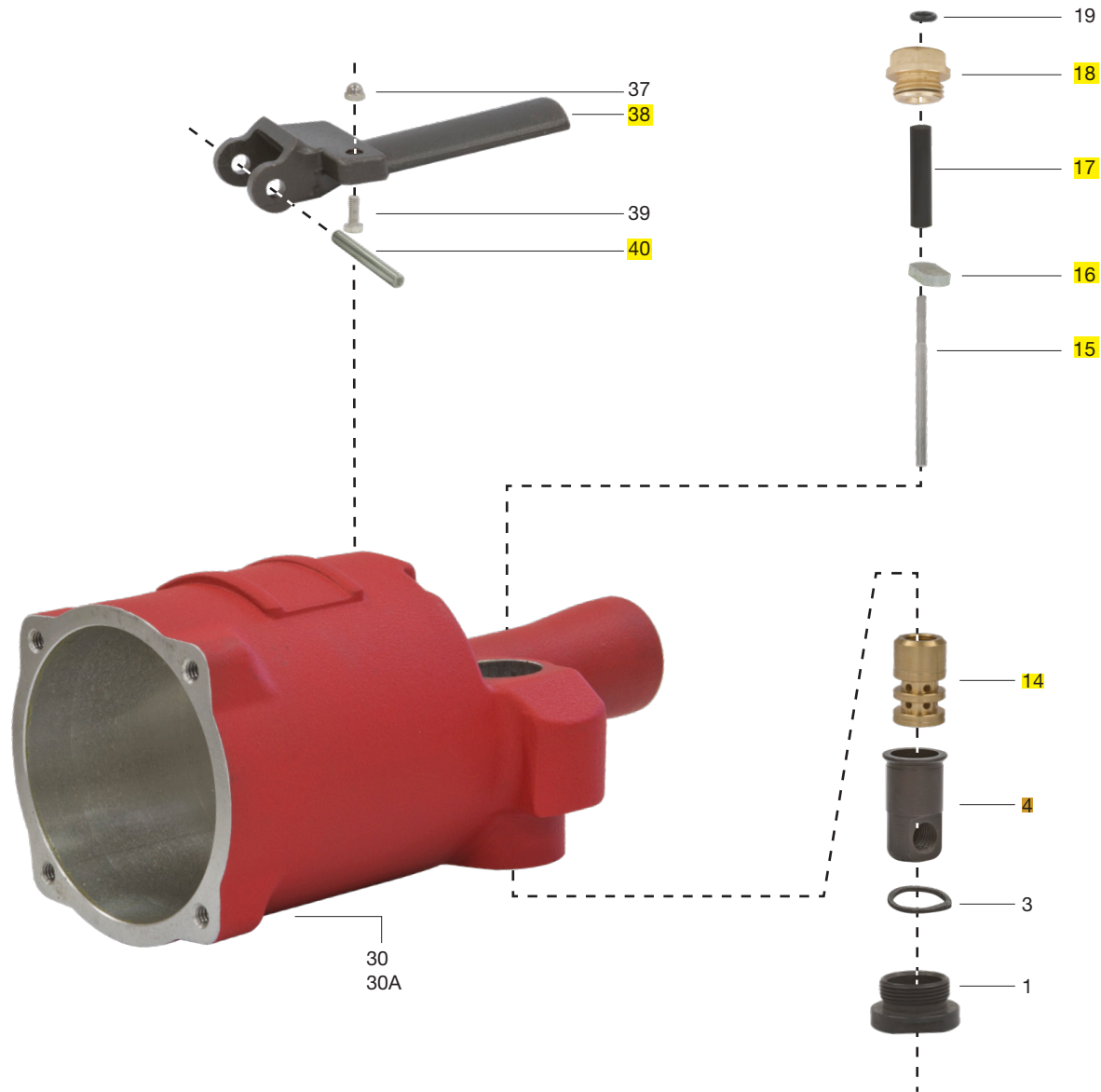




MICHIGAN PNEUMATIC TOOL, INC.

MP-351FCT08 Air foot pedal control with throttle valve mechanism





MICHIGAN PNEUMATIC TOOL, INC.

MP-351FCT08 Air foot pedal control with throttle valve mechanism





MICHIGAN PNEUMATIC TOOL, INC.

MP-351FCT08 Installation Instructions

1. Remove the throttle lever pin #40 and the throttle lever #38.
2. Remove the valve stem bushing #18 by turning counterclockwise.
3. Remove the throttle valve stem assembly #15, #16, #17.
4. Install the foot control assembly "A" by threading it clockwise on the throttle valve bushing #14.
5. Install the hose assembly #1 to the air inlet swivel #4.
6. Install the hose assembly #2 to the foot control assembly "A".

Note: For forward stroke speed adjustment, turn the 1/2" chrome adjustment hex nut on the Air Switch assembly clockwise to reduce speed, and counterclockwise to increase speed.