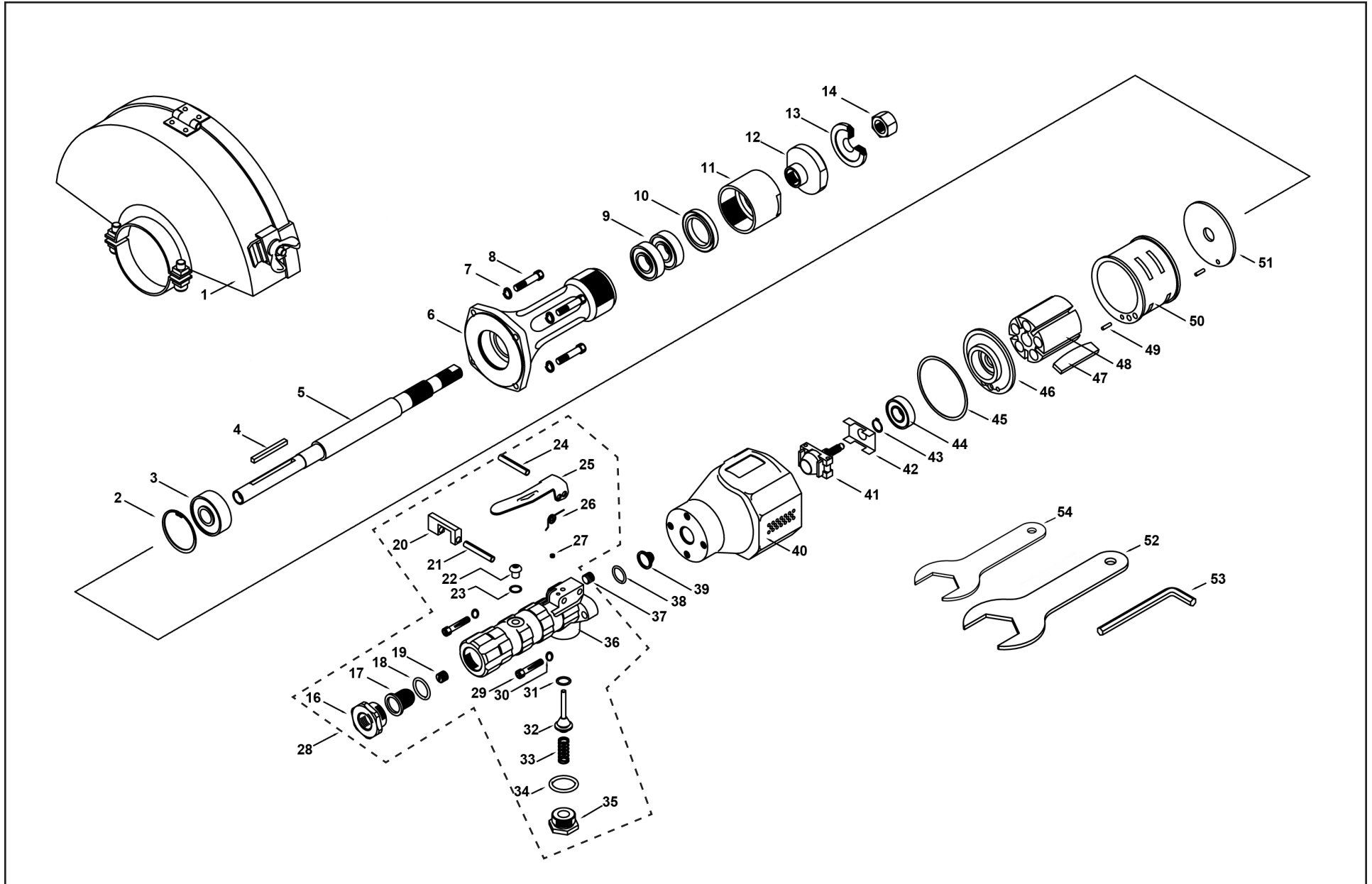




**MICHIGAN PNEUMATIC TOOL, INC.**

# **MP-5666HS 6" Straight 6000 rpm Grinder**



6850 Middlebelt Rd. • Romulus, MI 48174 • 1-800-521-8104 • Ph: (313) 933-5890 • Fax: (313) 933-0440

www.michiganpneumatic.com • e-mail: mpt@michiganpneumatic.com

08192021Rev9MME | DD



**MICHIGAN PNEUMATIC TOOL, INC.**

# MP-5666HS 6" Straight 6000 rpm Grinder

Index	Part No.	Description	Qty.
1	650-HS-56A	6" Guard Assembly	1
2	550-11H	Lock Ring	1
3	550-10H	Bearing (Housing)	1
4	550-10	Key	1
5	550-8H	Spindle	1
6	550-1H	Spindle Housing	1
7	700-46	Lock Washer	4
8	700-47A	Cap Screw	4
9	550-9H	Bearing Pair (Lower)	2
10	650-H-14	Seal	1
11	650-H-13	Bearing Cap	1
12	700-5	Rear Flange (6")	1
13	700-4	Front Flange (6")	1
14	700-34	Arbor Nut	1
16	550-33	Inlet Cap (*)	1
17	650-35	Air Screen (*)	1
18	650-61	Air Screen O-Ring (*)	1
19	400-33P	Oil Regulator (*)	1
20	650-56	Lockout (*)	1
21	600-54	Lockout Pin (*)	1
22	700-23	Oiler Plug (*)	1
23	832636	Oiler Seal (*)	1
24	550-50	Lever Pin (*)	1
25	550-38	Lever (*)	1
26	650-55	Lockout Spring (*)	1
27	650-57	Set Screw (*)	1
28	AA-650-1-ALS	Complete Throttle Handle Assembly - Includes all parts shown with (*)	1

Index	Part No.	Description	Qty.
29	700-48	Cap Screw	2
30	700-54	Lock Washer	2
31	200-9	O-Ring (*)	1
32	560-13	Throttle Valve Assembly (*)	1
33	650-51	Throttle Valve Spring (*)	1
34	650-118	O-Ring (*)	1
35	700-S-26	Throttle Valve Cap (*)	1
36	650-1-ALS	Throttle Handle (*)	1
37	400-37	Pipe Plug (*)	1
38	700-30	O-Ring	1
39	650-34	Air Screen	1
40	550-1-HC	Motor Housing	1
41	AA-550-60	6000 RPM Governor	1
42	600-48	Governor Retainer	1
43	1000-5	Lock Ring	1
44	700-9	Bearing (Upper)	1
45	550-13	Rear Gasket	1
46	550-3	Rear End Plate	1
47	550-6	Rotor Blades	5
48	550-5	Rotor	1
49	700-37	Cylinder Pin	2
50	550-2	Cylinder	1
51	550-7	Front End Plate	1
52	SCW-2	2" End Wrench	1
53	AW-532	5/32" Allen Wrench	1
54	SCW-1516	15/16" End Wrench	1