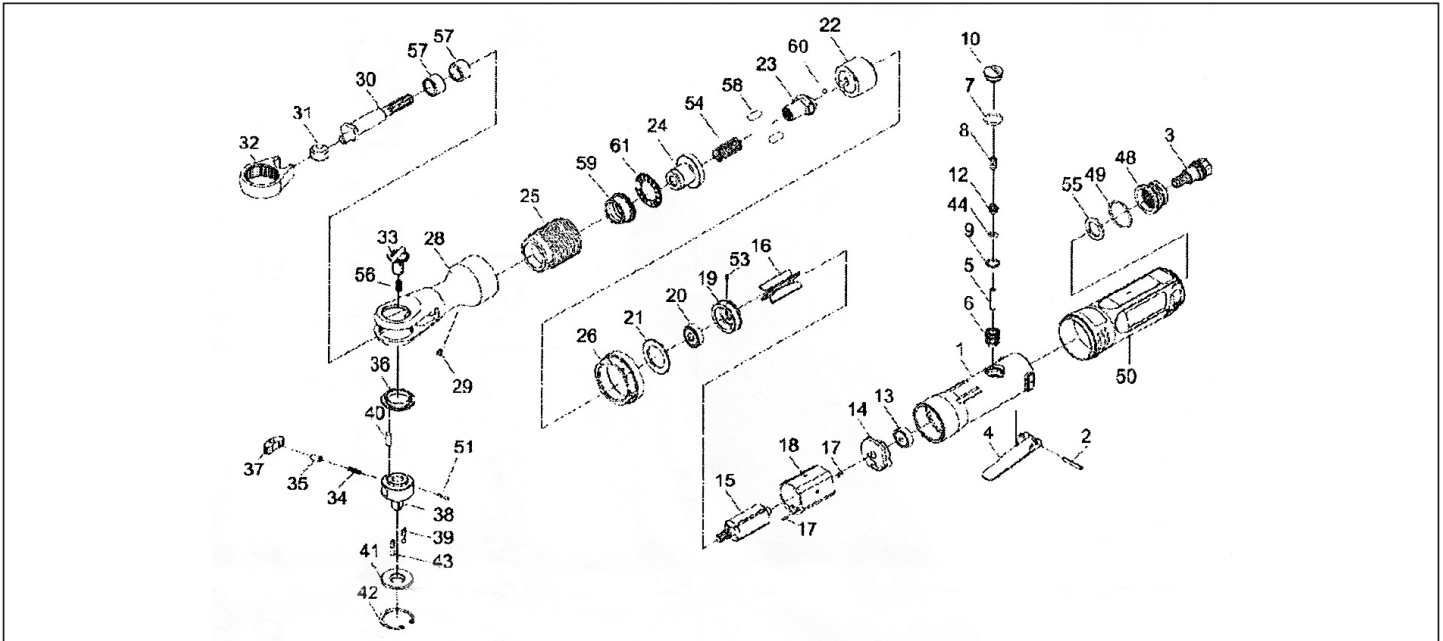




MICHIGAN PNEUMATIC TOOL, INC.

MP-7131-ST 3/8" Impact Ratchet



Index	Part No.	Description	Qty.	Index	Part No.	Description	Qty.
1	33-312301	Housing	1	31	34-301729	Drive Bushing	1
2	50102	Spring Pin (Ø3x22L)	1	32	33-301332	Yoke	1
3	33-312303	Air Inlet	1	33	34-301733	Reverse Button	1
4	33-301304	Throttle Lever	1	34	34-301732	Spring	1
5	33-301305	Throttle Shaft	1	35	34-301731	Lock Pin	1
6	33-312306	Bushing	1	36	34-301741	Washer	1
7	706109	O-Ring (14x1.8)	1	37	30137	Ratchet Pawl	1
8	33-301308	Spring	1	38	33-301738	Ratchet Anvil 3/8"	1
9	OR01000105	O-Ring (10x1.5)	1	39	30139	Spring	2
10	33-312310	Valve Plug	1	40	30140	Pin (Ø4.5x12.7L)	1
12	33-301307	Throttle Valve	1	41	34-301742	Thrust Washer	1
13	52213	Ball Bearing (696ZZ)	1	42	30142	Retainer Ring (RTW-31.5)	1
14	34-301714	Rear End Plate	1	43	30143	Steel Ball (5/32")	2
15	34-301705	Rotor	1	44	30107	O-Ring (3.8x1.9)	1
16	30116	Rotor Blade	4	48	33-302311	Deflector	1
17	30117	Spring Pin (Ø1.5x6L)	2	49	OR02607108	O-Ring (26.7x1.78)	1
18	34-301718	Cylinder	1	50	33-312352	Grip	1
19	34-301719	Front End Plate	1	51	PN02000608	Pin (Ø2x6.8L)	1
20	30120	Ball Bearing (608ZZ)	1	53	70117	Spring Pin (2x5L)	1
21	34-301721	Washer	1	54	34-301752	Spring	1
22	34-301740	Mechanism Housing	1	55	33-302312	Damping Material	1
23	34-301734	Mechanism Anvil	1	56	34-301753	Spring	1
24	34-301736	Mechanism Cover	1	57	30129	Needle Bearing (HK1212)	2
25	34-301735	Coupling Sleeve	1	58	PN06001108	Pin (Ø6x11.8L)	1
26	34-301717	Coupling Nut	1	59	34-301724	Bushing	1
28	34-301728	Ratchet Housing	1	60	AS000143	Steel Ball (3/16")	1
29	41-401254	Oil Cap (1/8")	1	61	0NTB1831	Thrust Bearing	1
30	34-301730	Crank Shaft	1				

07082015Rev3HMB | NP