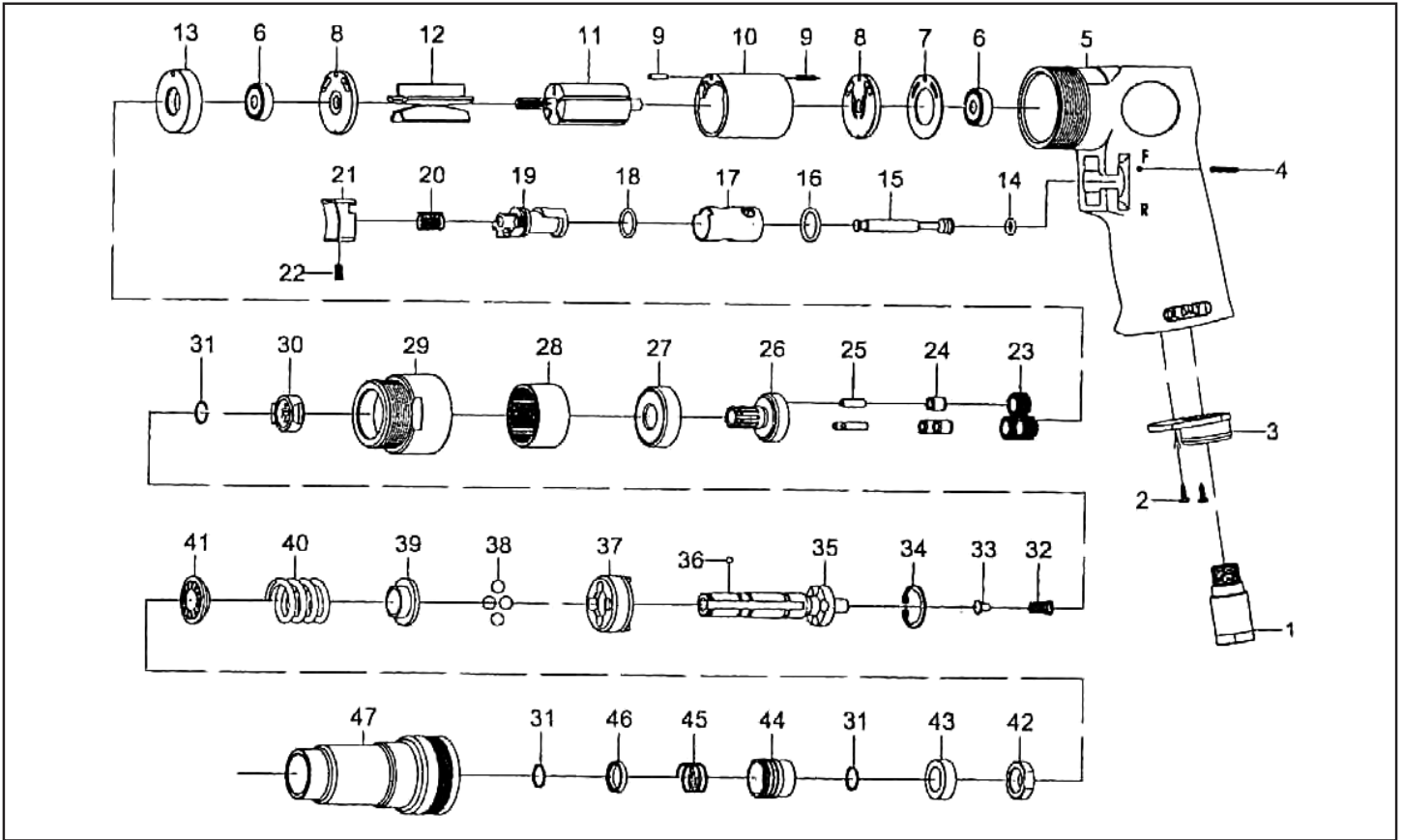




MICHIGAN PNEUMATIC TOOL, INC.

MP-7855-ST Adjustable Clutch Screwdriver



Index	Part No.	Description	Qty.
1	70103	Air Inlet	1
2	40309	Screw (M3*8L)	2
3	70110	Exhaust Diffuser	1
4	80202	Spring Pin (Ø2.5*24L)	1
5	80201	Motor Housing	1
6	030113	Ball Bearing (626ZZ)	2
7	80211	Motor Gasket	1
8	80214	End Plate	2
9	80217	Spring Pin (Ø2.5*10L)	2
10	80218	Cylinder	1
11	80215	Rotor	1
12	80216	Rotor Blade	5
13	80219	Spacer	1
14	70107	O-Ring (Ø4.8*1.9)	1
15	80205	Valve Spring	1
16	80247	O-Ring (Ø13.8*Ø2)	1
17	80206	Reverse Bushing	1
18	80209	O-Ring (Ø12*Ø1.6)	1
19	80210	Reverse Lever	1
20	70108	Valve Spring	1
21	70104	Trigger	1
22	70935	Set Screw (M4*8L)	1
23	80223	Planet Gear	3
24	80225	Bushing	3

Index	Part No.	Description	Qty.
25	80224	Pin (Ø4*13.8L)	3
26	80226	Work Spindle	1
27	080227	Ball Bearing (6201Z)	1
28	80222	Internal Gear	1
29	80228	Clamp Nut	1
30	80229	Drive Dog	1
31	80230	Retaining Ring	3
32	80220	Spring	1
33	80221	Spring Guide	1
34	80231	Snap Ring (ISTW-18)	1
35	80232	Cam Spindle	1
36	40145	Steel Ball (1/8")	1
37	80234	Clutch	1
38	80235	Steel Ball (1/4")	4
39	80236	Thrust Washer	1
40	80237	Spring	1
41	80238	Washer	1
42	80239	Adjust Nut	1
43	80240	Spacer	1
44	80242	Ball Retainer	1
45	80243	Spring	1
46	80244	Washer	1
47	80241	Clutch Housing	1

02152016Rev2HMB | NP